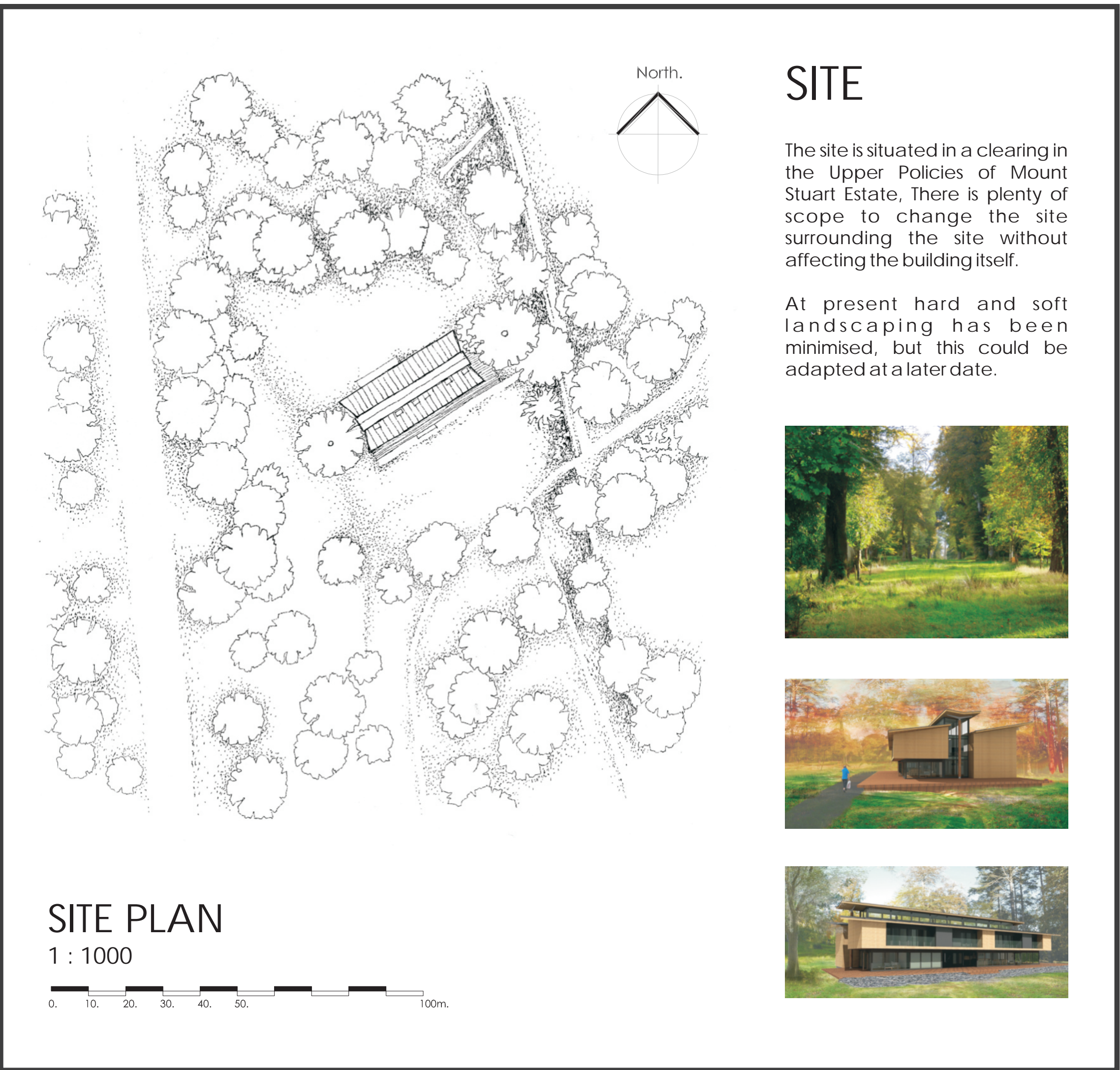
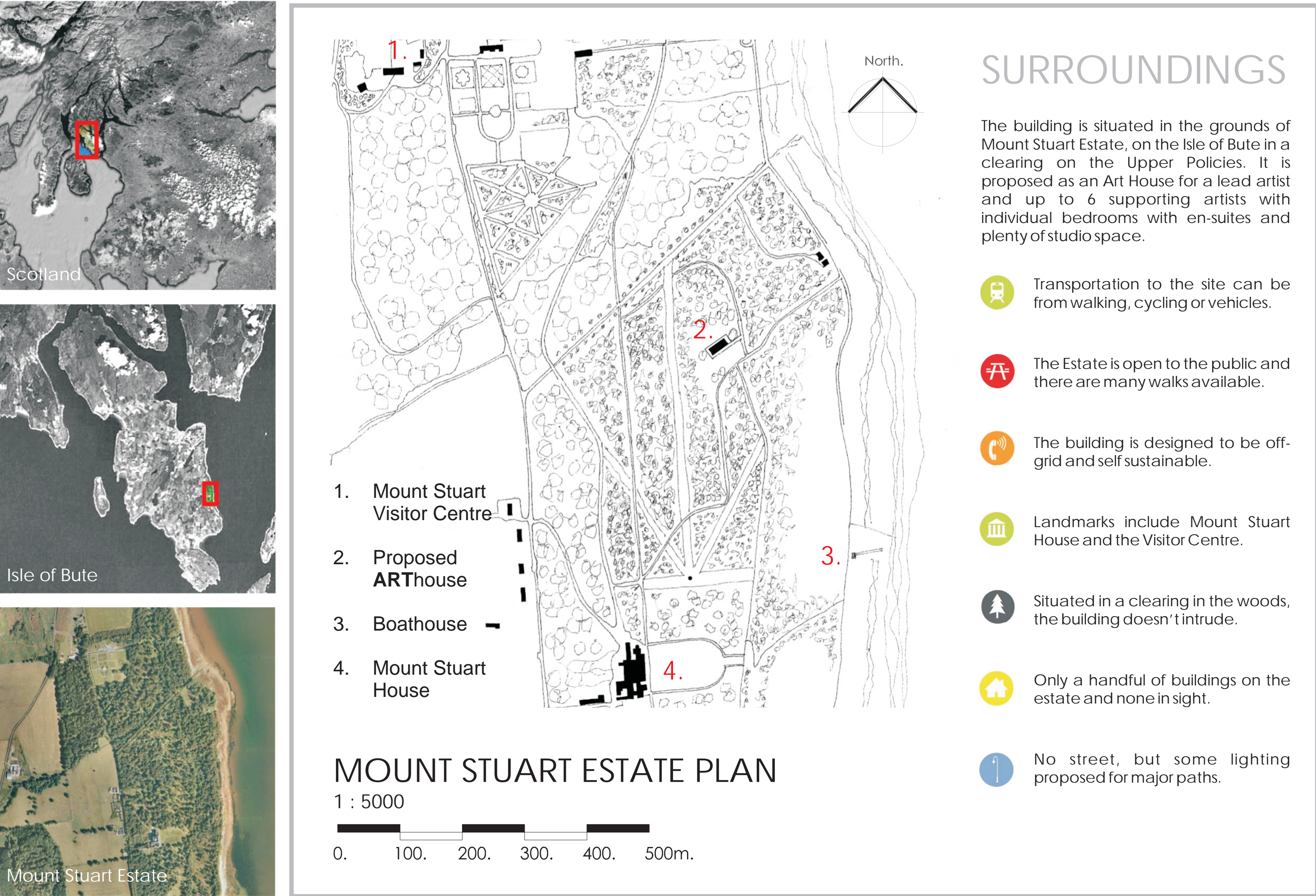


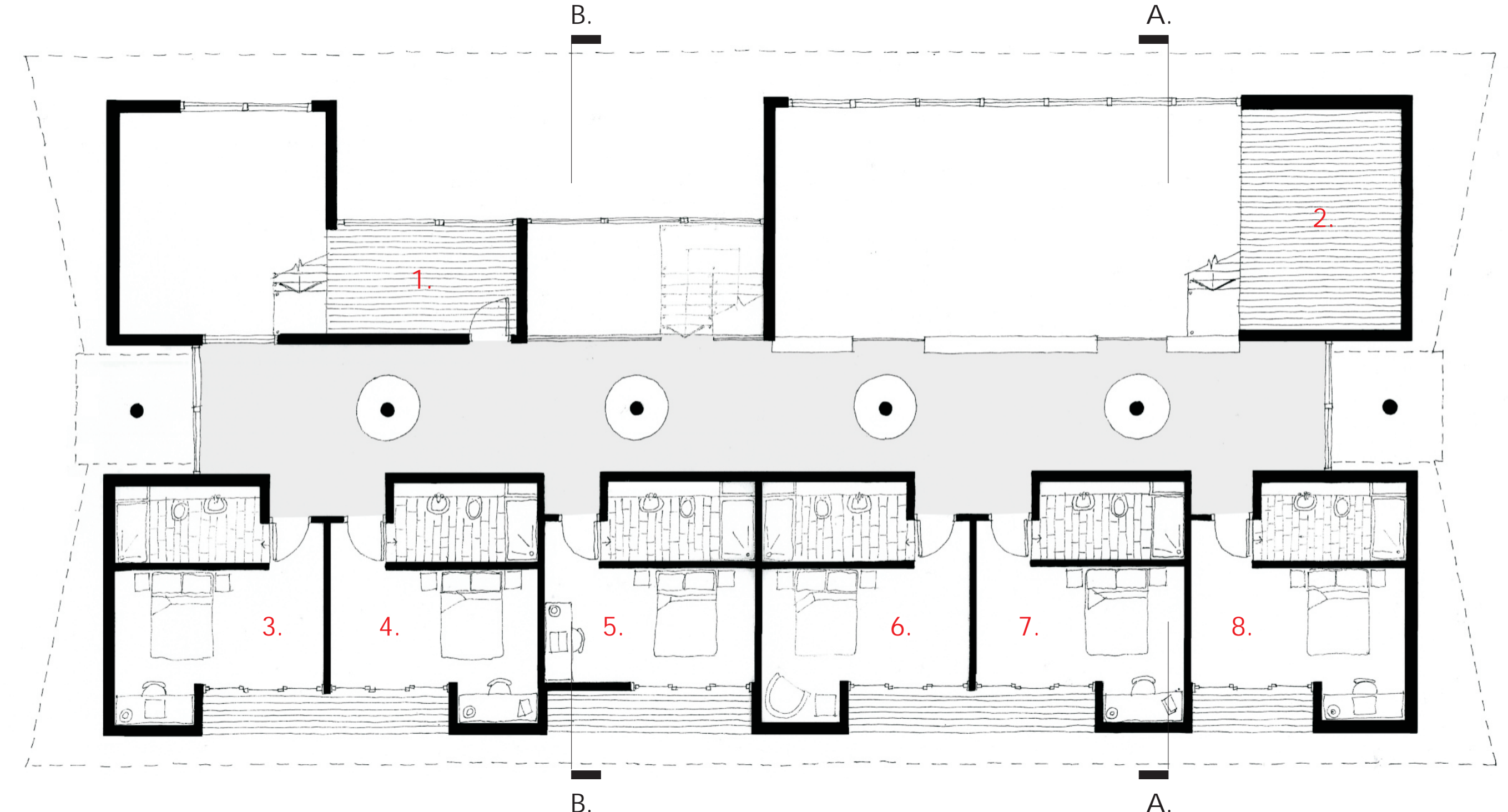
ADAPTABLE RESIDENTIAL STUDIO

relationship between building elements



SPACE PLAN

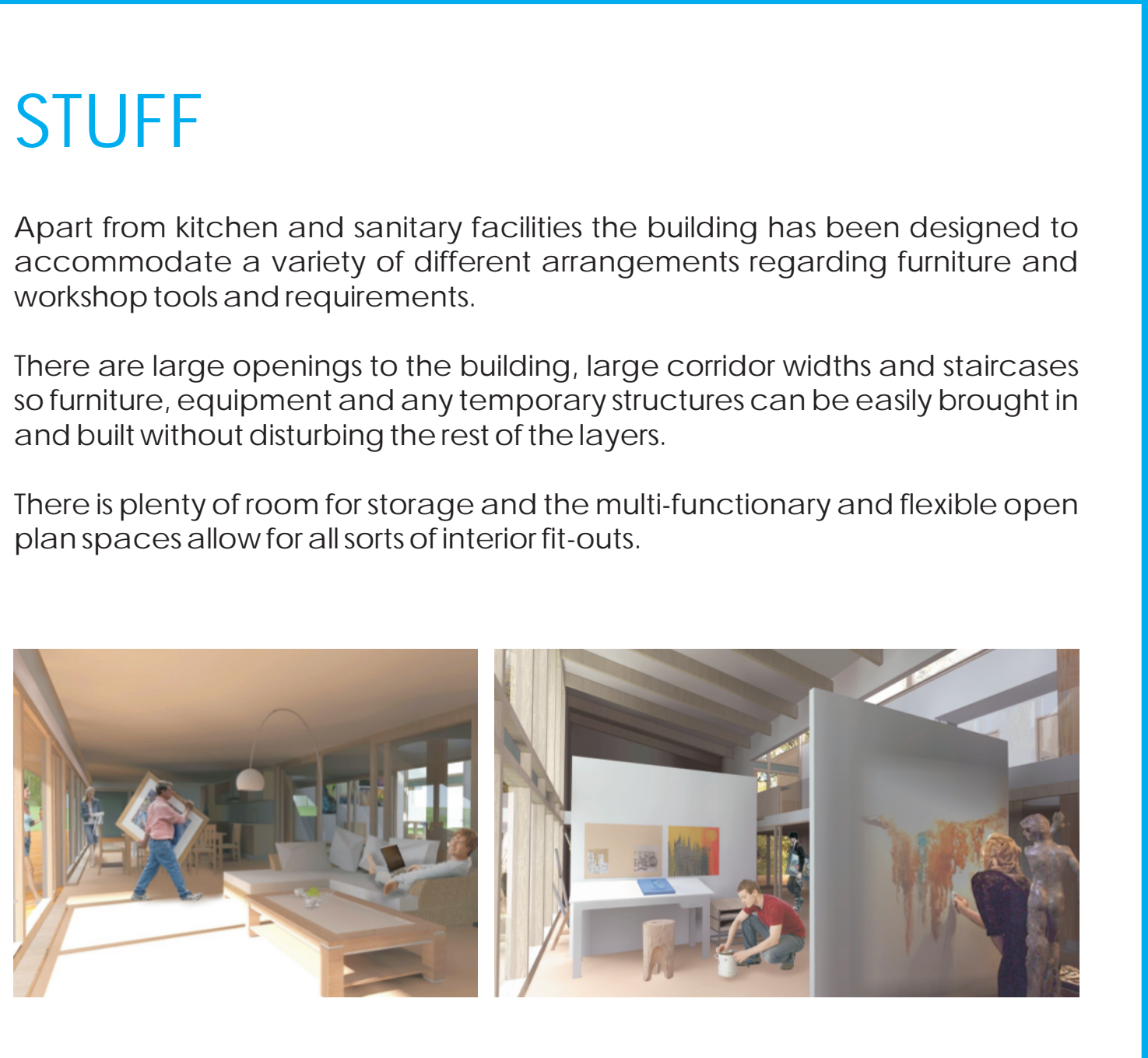
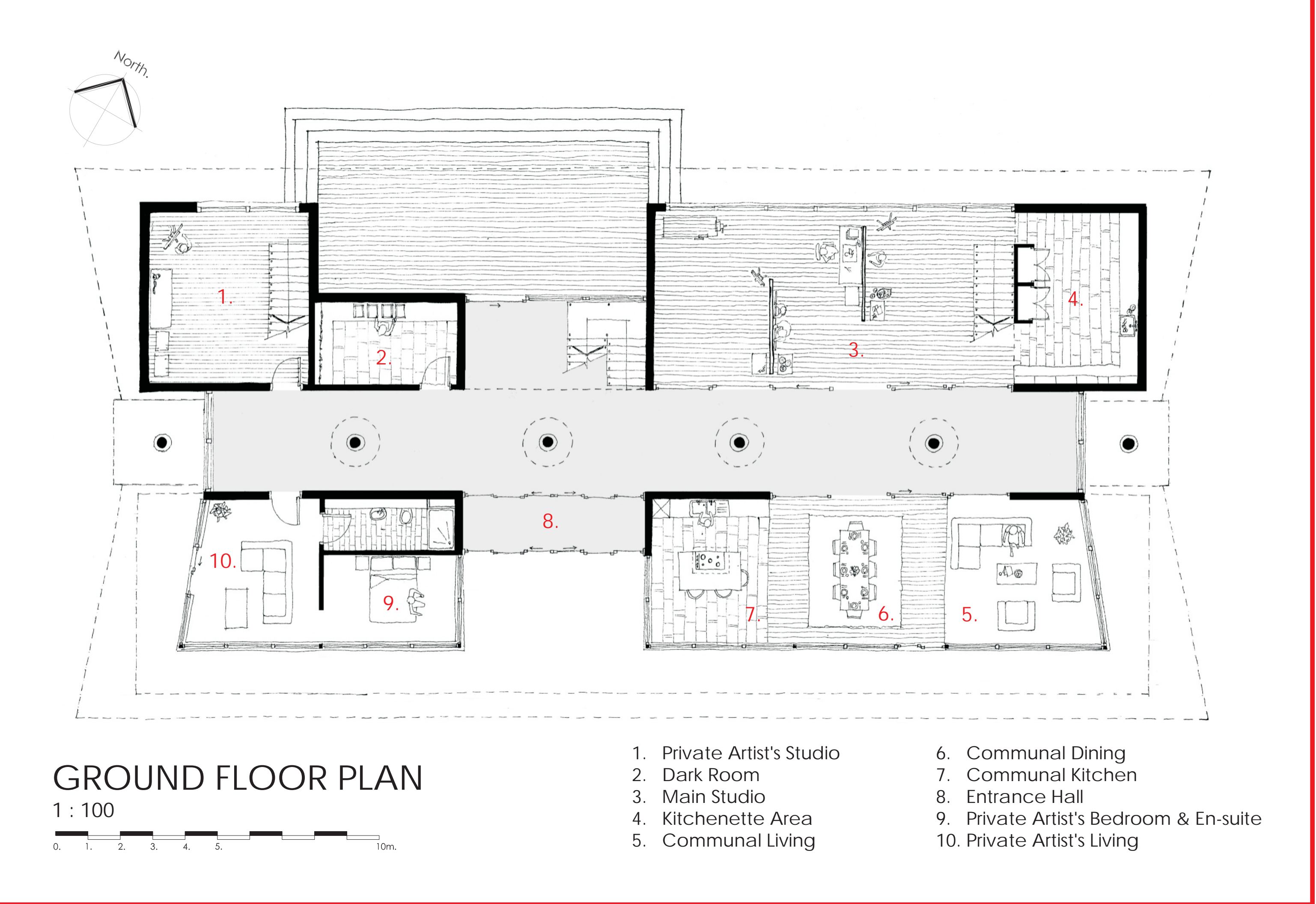
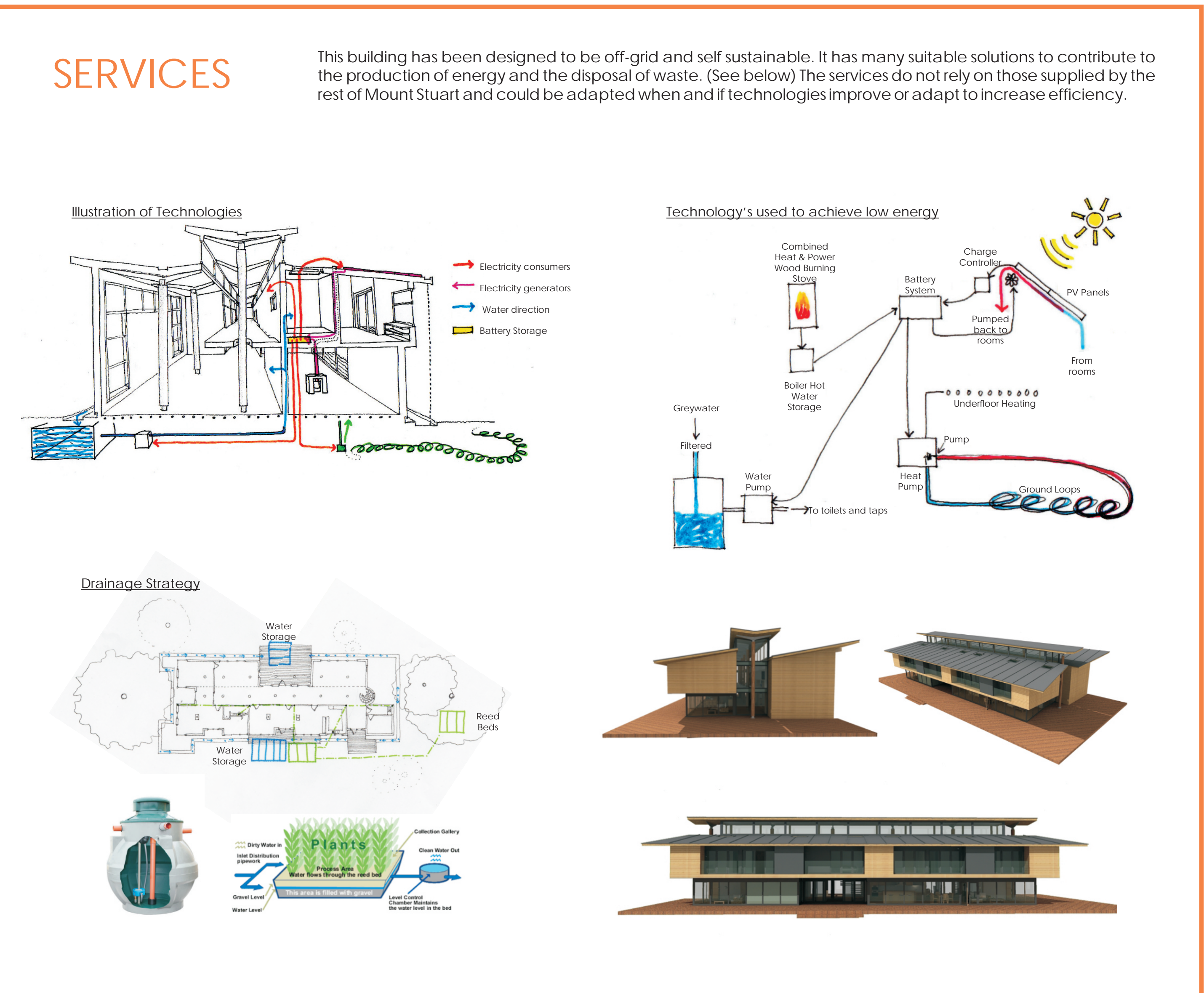
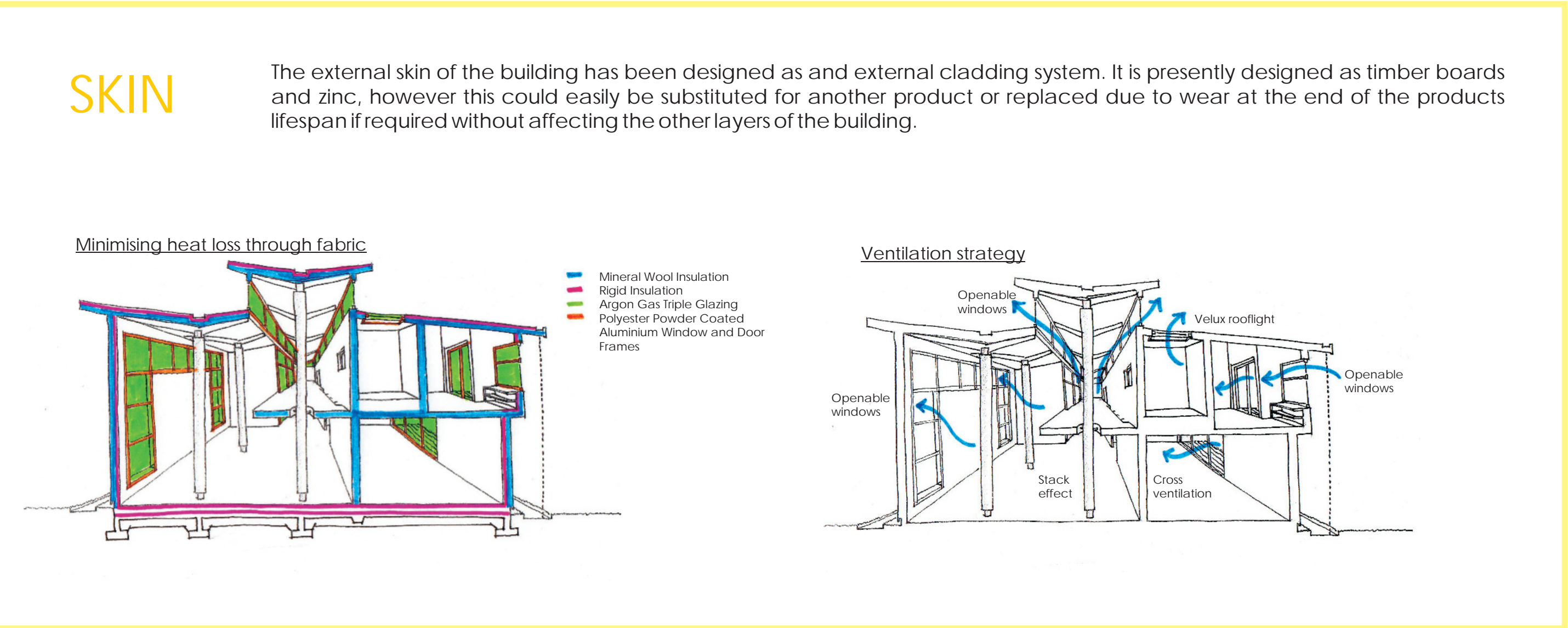
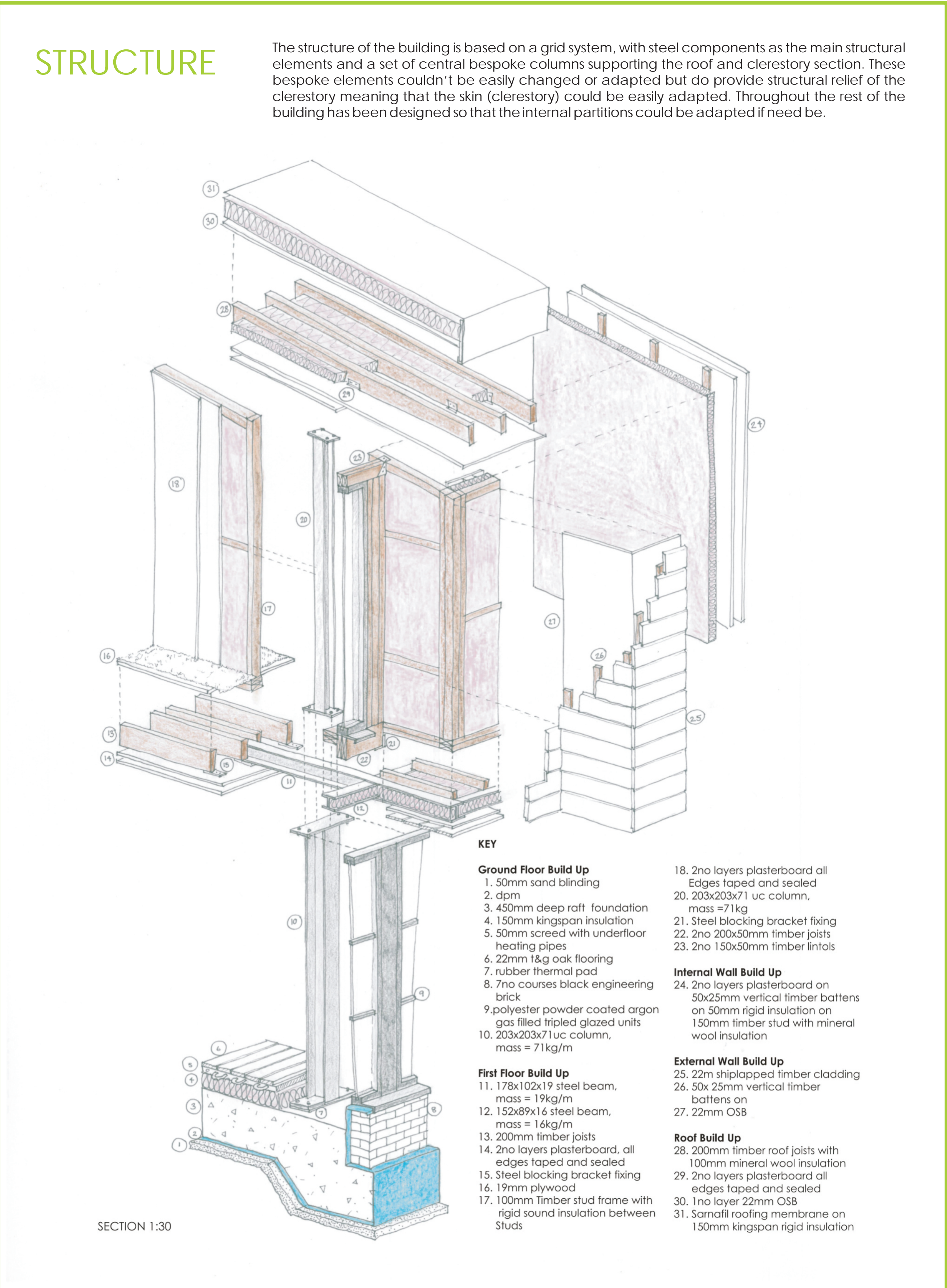
The building is currently proposed as an artist's retreat providing 6 individual bedrooms with en-suite facilities, a private bedroom, living and en-suite facilities for the lead artist and communal facilities for the supporting artists. There are two large volumes to the back of the building providing studio space over two levels with mezzanine space and double height spaces available. Both the living facilities and the studios have been designed as open plan with potential for partitions and movable walls to break up the spaces as required and without affecting the other layers.



FIRST FLOOR PLAN

1 : 100

0. 1. 2. 3. 4. 5. 10m.



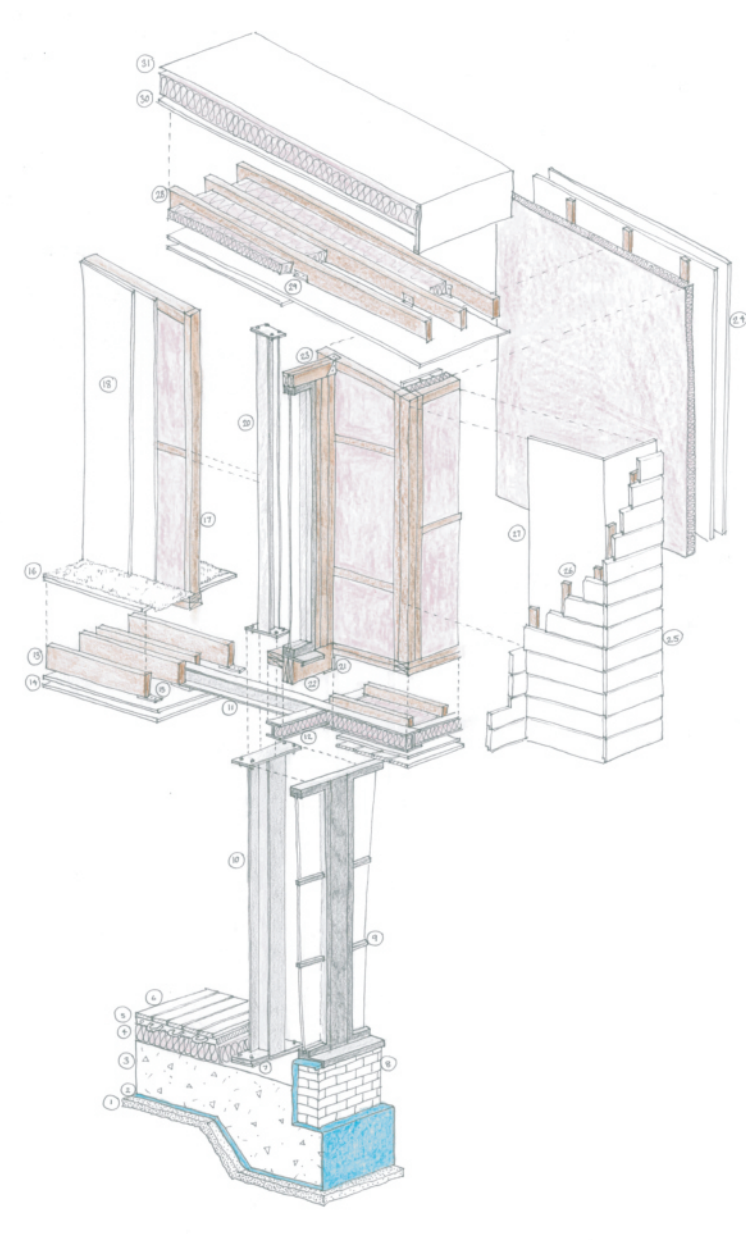
ADAPTABLE RESIDENTIAL STUDIO

accommodating a variety of changes

MOVABLE

- Inflatable
- Component weight
- Kit-of-parts
- Easy connections
- Collapsible
- Component scale

The building is designed using easy connections and a structural grid system with steel components. Structurally the building is split into three parts, the front, rear and circulation tying it all together. It has not been designed to move, but considering its light foundations and the connections used, it should be easy enough to transport it to another site if required.



SCALABLE

- Product platforms
- Local materials
- Known techniques
- Structural redundancy
- Modular units
- Extra space
- Dividable/joinable rooms

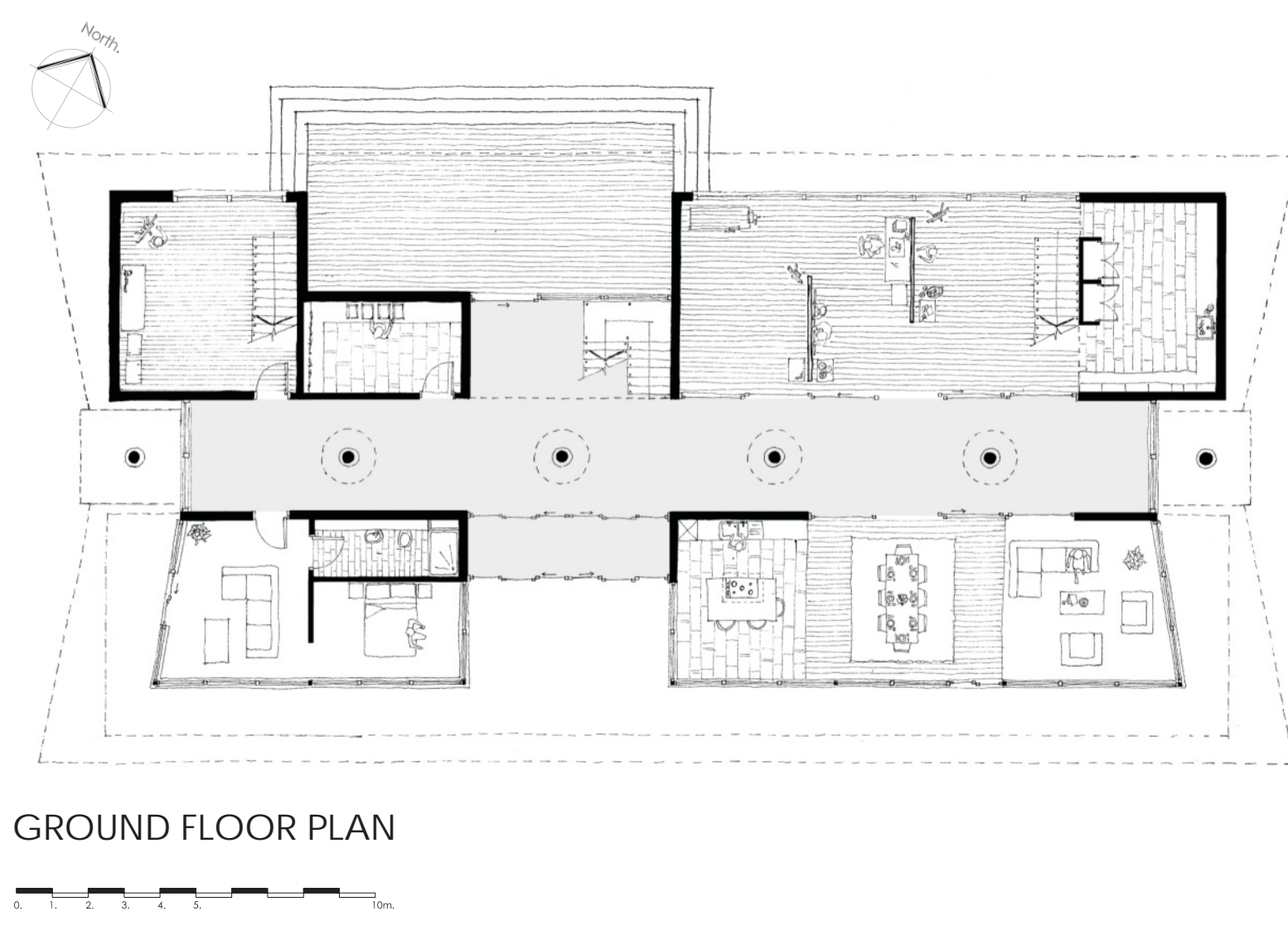
The building is designed into quarters with modular grid system, extra space throughout and dividable/joinable rooms. The communal living area and studio space have huge sliding doors which allow the spaces to inter connect and act as one large space. The structure has been isolated to a few main walls, to allow for flexibility throughout.



CONVERTIBLE

- Excess service capacity
- Raised floors
- Dropped ceilings
- Loose fit
- Multi-functional spaces
- Simplicity & legibility

The building could be easily converted into any kind of residential retreat. The building is simple and easy to read, accommodation is defined and the main studio and circulation spaces can be adapted to suit any activity.



REFITABLE

- Access points
- Standard shapes
- Dry connections
- Coordinated systems
- Interchangeable components
- Minimize points of contact

The building is designed to be refitable. It's design has to accommodate daily, weekly, monthly, seasonal or annual changes to its residents and therefore its choice of artwork being produced and activities taking place. It is designed so that each residency can use the building as it needs and it is expected that from each residency to the next there will be necessary fit-out changes to the interior of the building.



VERSATILE

- Flexible ducts
- Storage space
- Wide corridor widths
- Movable walls
- Variety of room sizes
- Frame construction
- Excess service points

There are plenty of duct spaces between the floors, and in the voids above the bedroom and bathrooms. There are ample storage facilities throughout the building, however most long term storage would probably take place off site in the grounds of Mount Stuart. There are generously wide corridors intended to double up as viewing galleries, in the case of the art house. The walls in the main space are movable, and new walls/partitions can be built both within the studios and the communal living area. The two studios vary in size and both incorporate mezzanine levels to suit all types of artists and preferred working spaces.



ADJUSTABLE

- plug and play elements
- operable elements
- user control
- stackable
- non-fixed objects
- detachable connections

The building is fully adjustable to the users needs and requirements. There are movable screens, de-mountable partitions, plenty of space and users are encouraged to adapt the space to their needs and requirements.



COMPONENTS

The building has been designed with a grid steel structure situated at regular intervals and using standard sizes and connections. The structural walls provides a skeleton to the spaces which are then further defined by flexible internal partitions. The long-term elements are the main structural walls, floor and columns but the short term customisable features are the internal partitions and screens.

There are light connections between the main structural elements and the temporary flexible partition walls, and between the structural feature columns and the surrounding first floor. These components are at a human scale and easily accessible.

The main design concept behind the art house is that the studio space can be adapted and re-used for the individual occupants' own requirements. The design incorporates unmovable feature structural columns and main structural walls that do most of the work, allowing for there to be more flexible and open spaces that the occupants can then split down into smaller spaces as they wish.

The requirements for change within the building may happen on a daily, weekly or monthly basis depending on the users requirements, but the building may be adapted on a larger timescale to accommodate another type of occupant such as musicians, or dancers, writers or sports activities. The beauty of the building is its adaptability and ability to respond to the requirements of each user over a short term period or longer time frame. The building is suitable for customising and flexible enough to have many different uses.

It has been designed split into five parts, splitting up working and living areas, and private and communal areas. And yet all these areas can also be opened up and used collectively.

SPACES

The building provides a double height studio space to the rear with full height glazing allowing in sufficient north light. This studio space is split t one end into a mezzanine level providing a small kitchenette and washing up area underneath with storage and a first floor height area to work for anyone wishing to use a more enclosed space. This space is generously proportioned and can accommodate numerous activities at the same time and be fitted out with temporary partitions if the space is required for smaller projects.

The corridor acts as an additional space, it can be used as a viewing gallery, as a workshop, a place to relax, or an exhibition. This circulation space serves as multi functional space for the user to use and adapt as they choose.

Within the communal living areas there are no room labels, no defining walls or floor finishes. This space is intended to be used as the occupants find natural. This space might evolve over time, as more (or less) occupants join (or leave) the building. There is a connection to outdoors in these areas and this is intended to act as an additional space when weather permits.

MINDSET/CULTURE

Users are encouraged to make this building their own. There are minimal features and maximum blank spaces, especially when proposed as an artist's retreat, this provides a blank canvas for the users to create and produce some fantastic work, and hopefully this will create a sense of identity and community.

The building is off-grid and set in the grounds of a massive estate. Occupants of the building are expected to help maintain the building and surrounding landscaping, get involved with providing firewood and tending to the reed beds etc. It is intended that staying at the building is an all encompassing experience.

The building can be used to exhibit the artists work when complete and can act as a catalyst for encouraging the public in to Mount Stuart Estate and start a dialogue about off-grid buildings and the quality of the building as inspiration to the artwork being created.

With each residency the building will be used differently, so this can be monitored and altered as the building grows and supports its occupants.



ARThouse
Kirsty Cassels

