

THE SCHOOL OF ANARCHIC CONSTRUCTION - the principals

This project developed as a reaction to a much wider situation than the site and its immediate context in Salisbury.

My scheme proposes an alternative to shopping as the future for all cities. Masterplanning in the sense of deciding in advance what an area needs and how it should be provided is entirely rejected and replaced by the concept of non-plan, removing all legislative restrictions and impositions.

Non-plan in this case does not mean a complete laissez-faire approach to development, rather a series of interventions are proposed to avoid large-scale developers exploiting the site and taking the non-plan to its inevitable conclusion of car-driven market failure.

A route is created across the site, linking disconnected neighbourhoods and forming an armature around which the first development will coalesce, the rest of the site is scattered with a grid of supports for new development, interspersed with circulation that reflects the historic density of Salisbury.

The programme of my building, an anarchic construction school, is intended to facilitate the development of the site, training craftsmen, builders and designers to create whatever they want and need, free from traditional restrictions and anarchic in the sense of freedom for individuals from state control, freedom to establish non-hierarchical and voluntary associations.

The School begins as a simple timber construction, aligned with the new route and built on stilts over an area of the site left clear for future adaptation to and mitigation of flooding. The building integrates with the route, forcing interactions between students, occupants and visitors, the concept of an Oxford quad unravelled along a bridge. The building is an armature for adaptation and expansion, designed around central circulation and an overbuilt timber frame, students are able to experiment with the building and with any methods of construction, creating various protrusions and interventions.

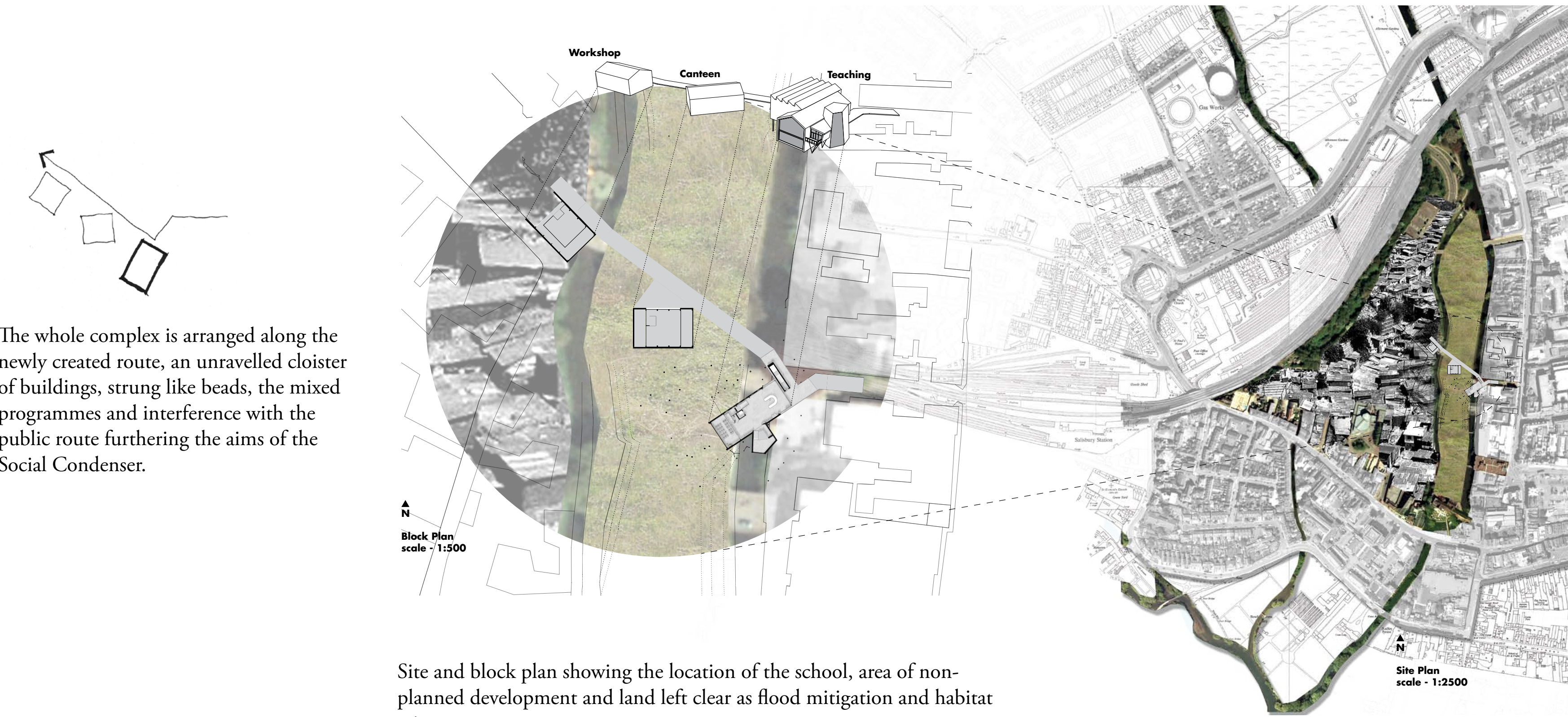
The first of these, a small office, uses leftovers from the construction process, scaffolding, shuttering timber and others to test the building's ability to accommodate extensions.

As the use of the building intensifies and the students' confidence improves a library tower is built, using the supports from the masterplan and bursting up and out of the original envelope, its construction a skin wrapped around an almost reciprocal frame.

The final iteration of the building explored here, but by no means the final iteration over its lifetime, is the archive. After 80 years of the site running as an autonomous and self regulating community huge amounts of records, designs and other material has been produced and is overwhelming the teaching building. An archive is constructed to house this material, its form designed to be endlessly and cheaply repeatable as the need for storage grows, engulfing the original building, its construction almost industrial and more permanent than the earlier additions, the building ossifying as its bones turn from timber to steel in parallel with the community it fostered.



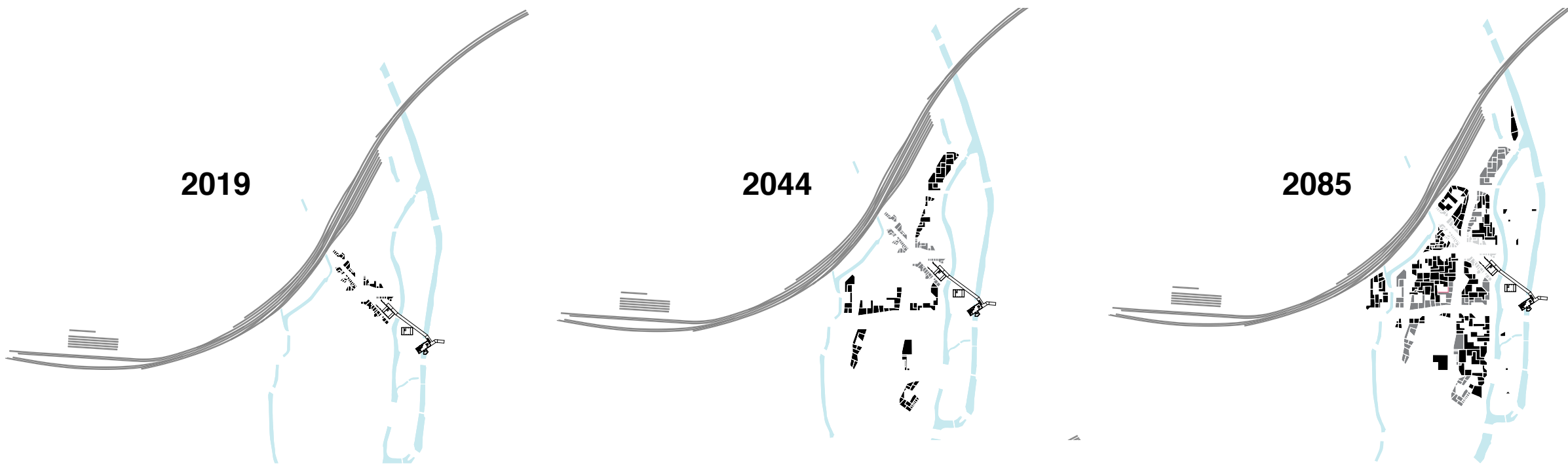
The site location in the centre of Salisbury



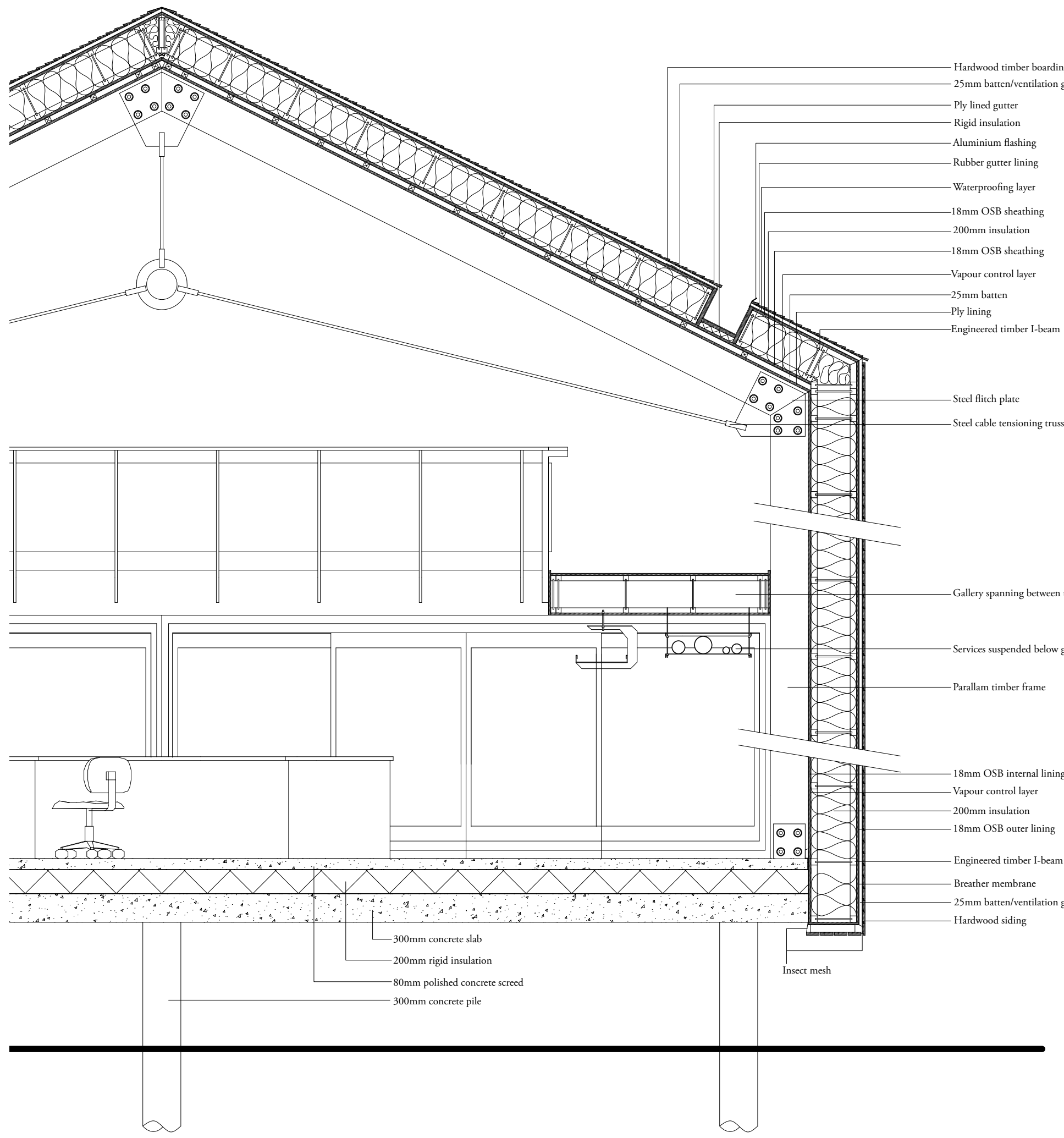
The whole complex is arranged along the newly created route, an unravelled cloister of buildings, strung like beads, the mixed programmes and interference with the public route furthering the aims of the Social Condenser.



The three elements of the masterplan, the route, the grid and the supports



development of the non-planned site over time, coalescing around routes first, then infilling.

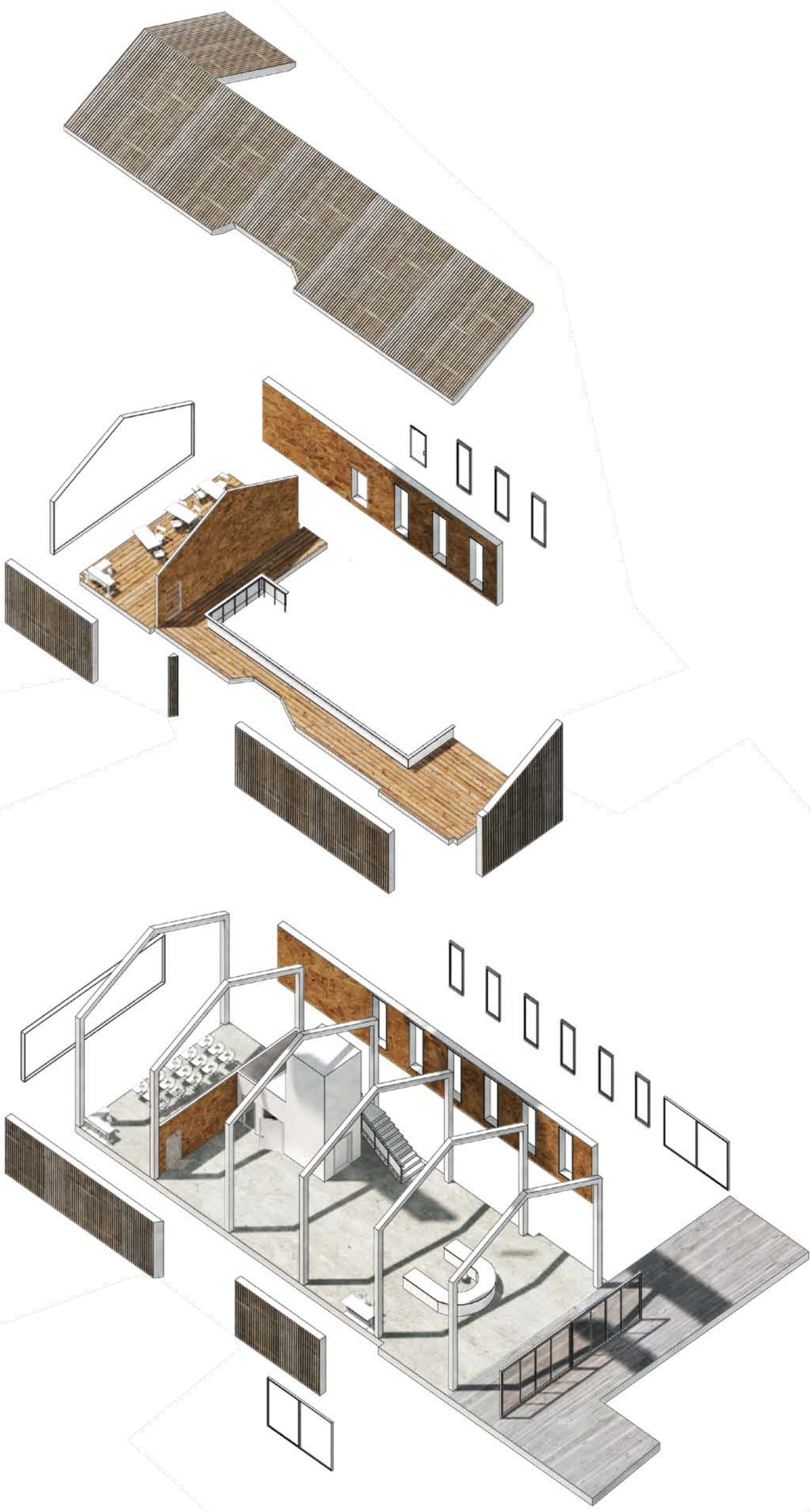


Technical section and exploded axonometric showing how Brand's notion of shearing layers is represented throughout the building at all scales.

A heavyweight concrete plinth provides a robust support for the overbuilt timber frame - elevated above future flood levels.

Internal circulation sits independently of the frame and supports the exposed services network, all easy to maintain and upgrade.

The skin of the building wraps the whole, separated from the structure and able to be cut through at any point.



The overbuilt parallam timber frame is erected by hand - involving the whole community and acting as the first lesson in construction.



A common material language is adopted throughout the building - lower quality materials such as OSB indicating panels that can be removed, while higher quality finishes denote important structural elements.

2085

Site section

established non-planned site

reinstated flood meadows

walkway raised above flood level

archive

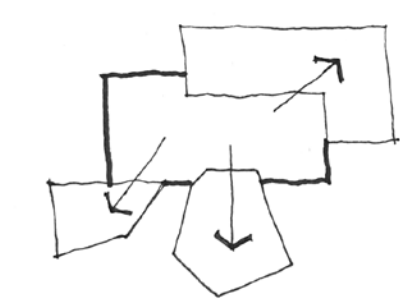
original core of building

library extension

existing city

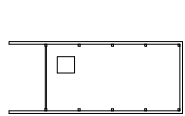


LIFE OF THE BUILDING - the interventions

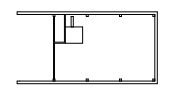


As the use of the building develops over time various interventions are made by the staff and students into the original built fabric, creating new spaces and testing materials and construction methods.

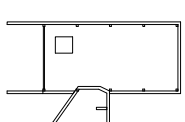
Gradually the rest of the site develops as graduates from the school test out their newly-learnt skills, the ad-hoc nature of the development simply an expanded version of the development of the school itself.



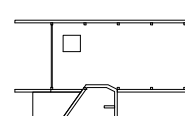
Speculative and experimental floor plans, new uses bursting through the envelope of the original building first parasitically, then enveloping it over time



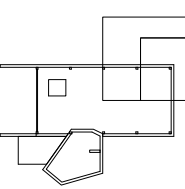
2015



2019



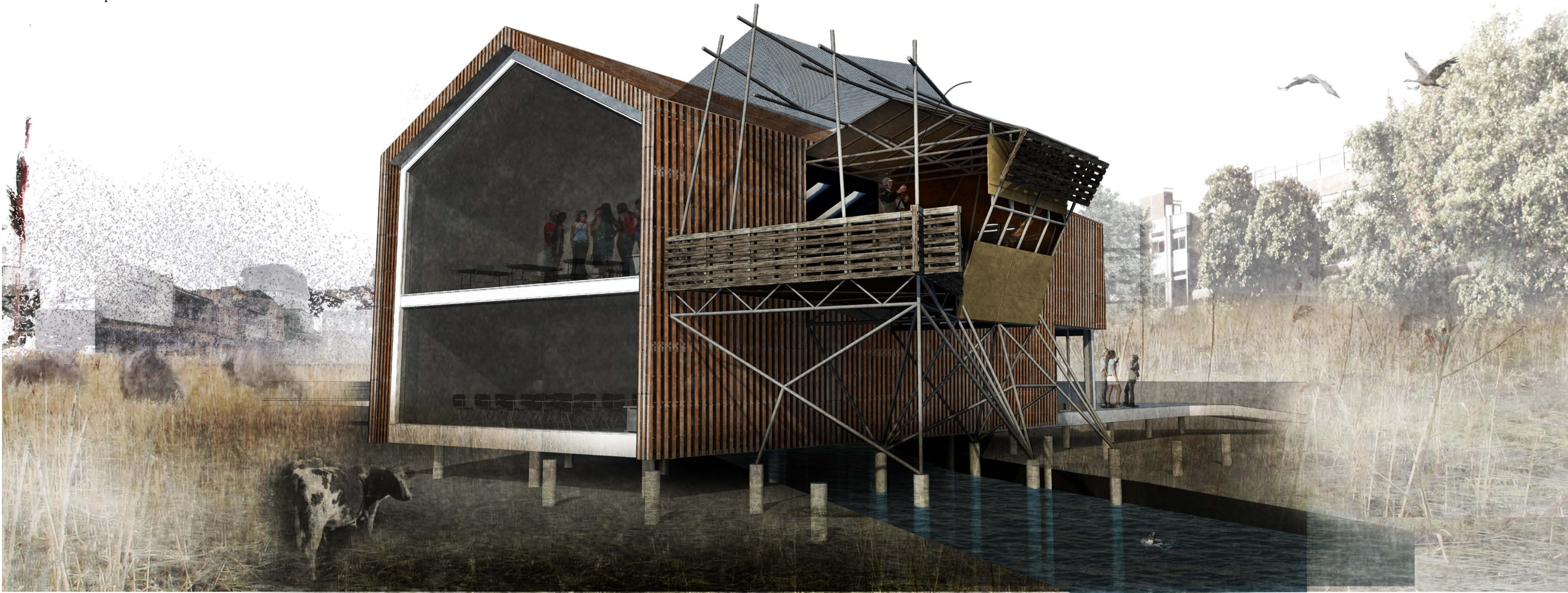
2044



2085

2015
Original floor plans

2085
Floor plans after 70 years of extensions



2019

The first extension to the school building - an office that just happens to be a good spot to fish from



2044

A new library bursts put and upwards from the original building, shown here as the reinstated wetland floods under the pressure of increased future rainfall, the building lifted above the water on piles, the space given to water mitigating the impact on the rest of the city.



2085

The building after its first 70 years, the archive, containing the records for the new site being extended as it gradually engulfs the original building

The Archive - 2085

Built to hold the ever-growing mound of information and records that the site and school generate, slowly and parasitically overwhelming the structure of the original building.

The 'office' - 2019

The first built intervention into the building structure, built from leftover construction materials and conveniently overhanging the river, teeming with fish after the watermeadows' reinstatement

The Library - 2044

The central space of the building fills with people visiting the school and moving through the site, forcing the library to burst out through the side of the building and extend upwards, the tower lined with books

Exploded Axon showing extensions made to the school over time.