

**WHERE**

BEING THE GEOGRAPHICAL CENTER OF CARACAS, THE CENTRAL UNIVERSITY OF VENEZUELA PROVIDES MANY SERVICES TO THE CITY IN ADDITION TO EDUCATION. THE SPORTS FACILITIES (BASEBALL & SOCCER/OLYMPIC STADIUMS) CONSTITUTE A COMMON GROUND BETWEEN UNIVERSITY & CITIZENS, THEREFORE A NOTABLE LANDMARK & ACTIVITY NODE IN THIS TROPICAL CONTEXT.

**CONSIDERATIONS**

SIMULTANEOUS ACTIVITIES  
 DRY/WARM WEATHER  
 RAINY SEASON  
 OPEN SPACE  
 MOBILITY PATTERNS

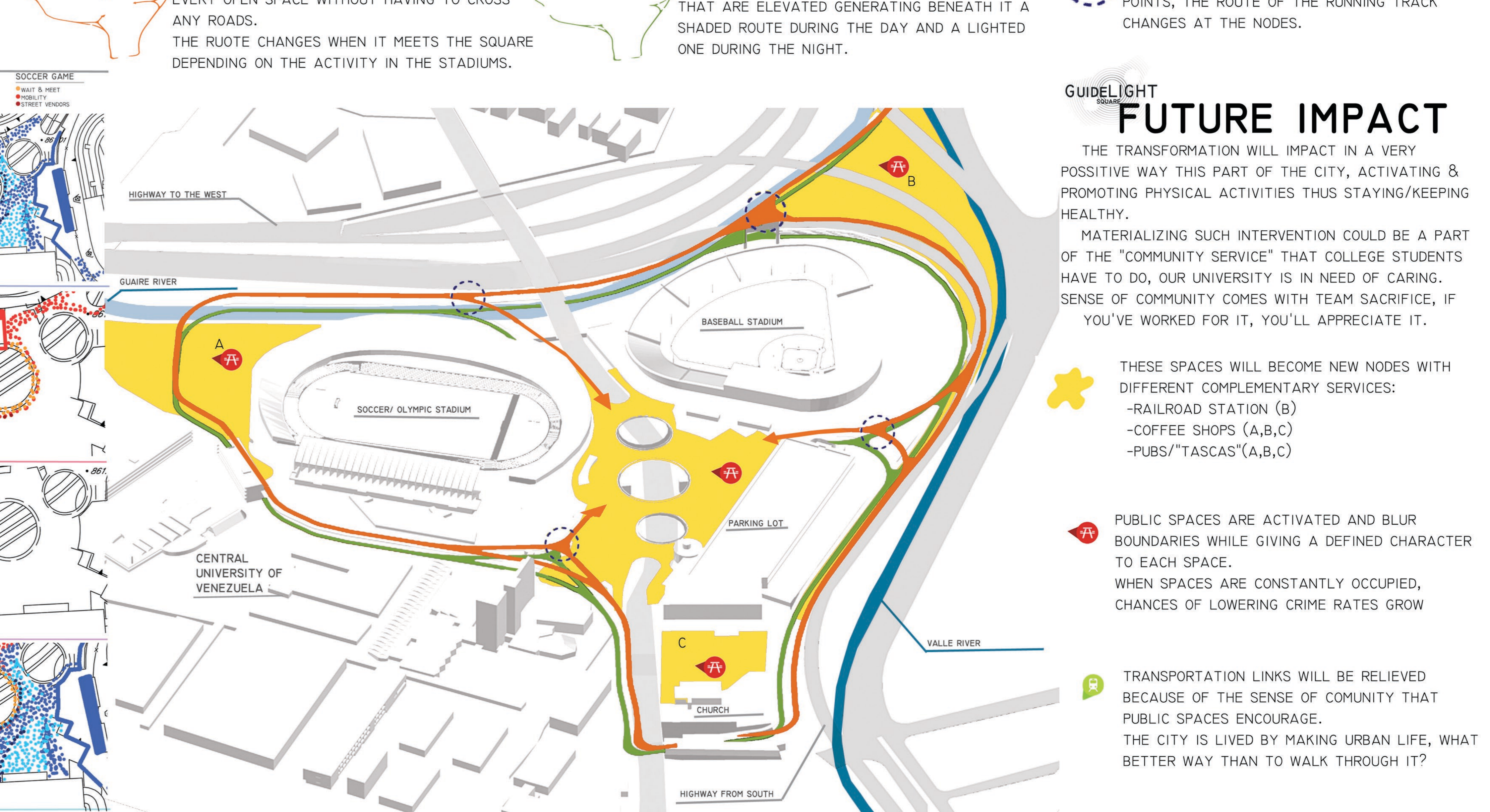
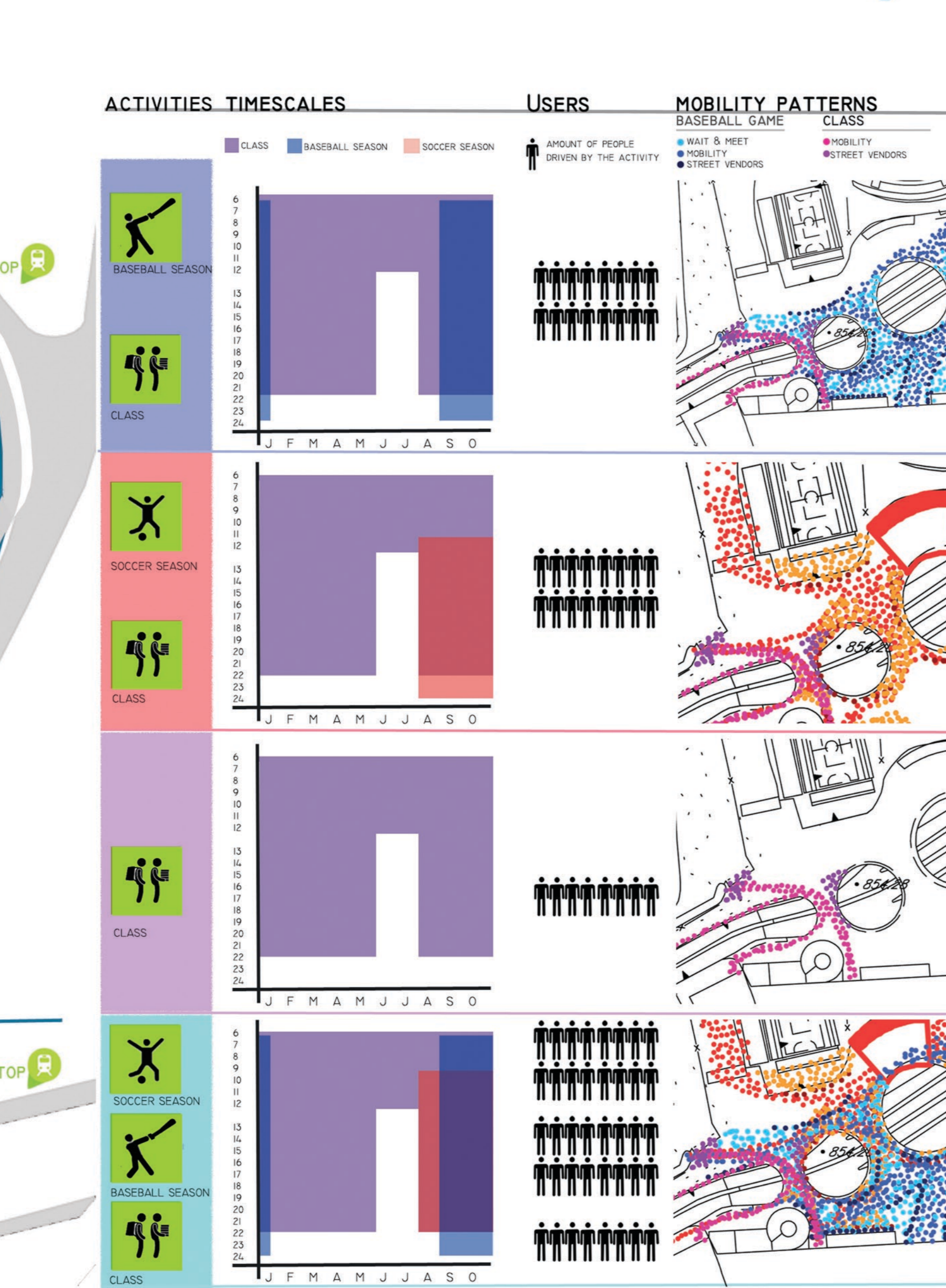
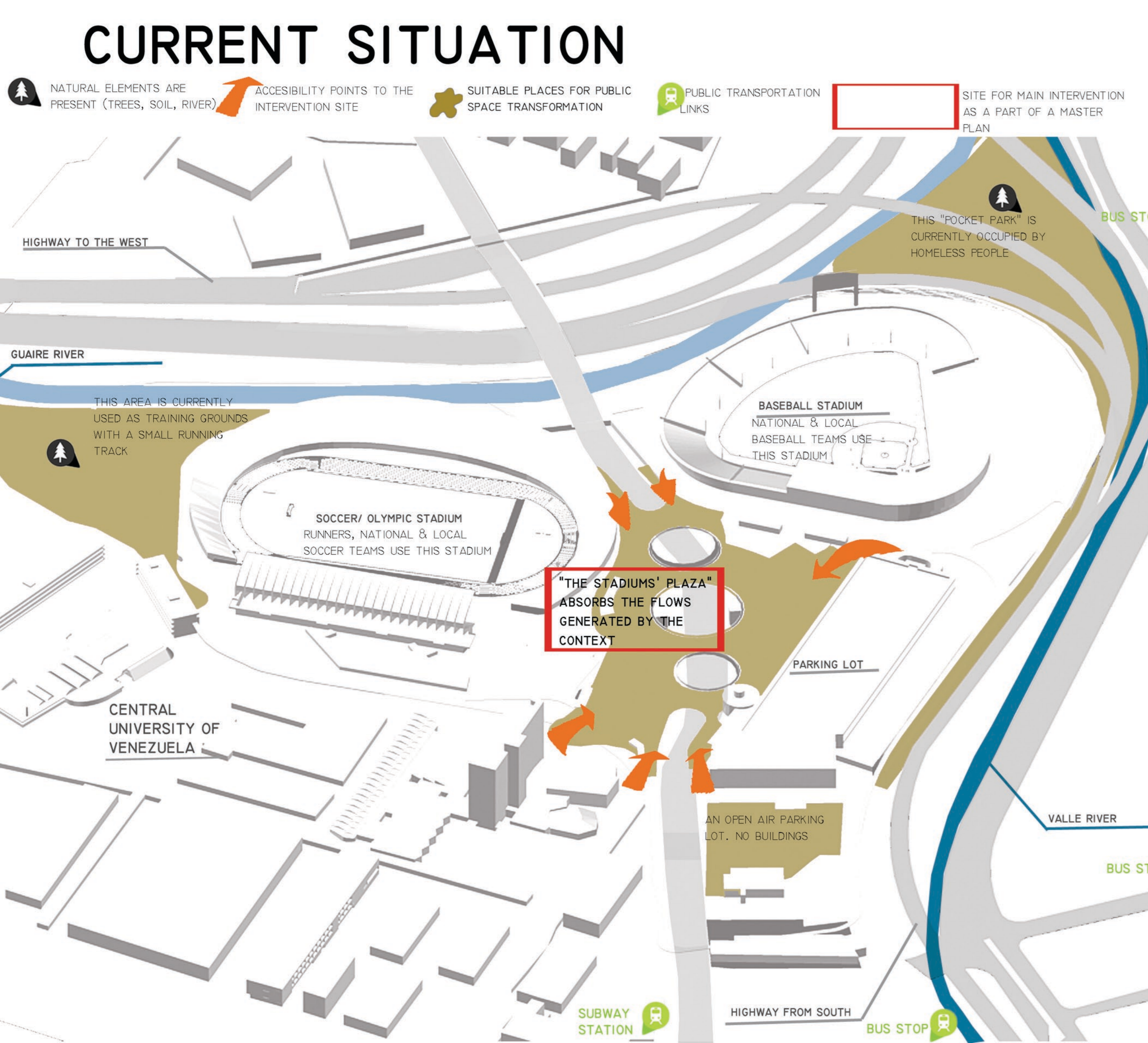
**MASTER PLAN**

TO GUARANTEE A SYMBIOTIC RELATIONSHIP & COHERENCE AMONG THE BUILDING LAYERS (SPACE PLAN, STUFF, SOCIAL) IN WHICH WE BASED OUR GUIDELIGHT SQUARE PROJECT, WE HAVE TAKEN AS A PRINCIPAL ASPECT THE WAY SPACE IS ACTIVATED, USED AND APPROPRIATED BY WHAT WE CONSIDER IS THE CORE ELEMENT OF CHANGE : P E O P L E (USERS)

**TRACK**  
 WE PROPOSE A RUNNING TRACK THAT LINKS EVERY OPEN SPACE WITHOUT HAVING TO CROSS ANY ROADS. THE ROUTE CHANGES WHEN IT MEETS THE SQUARE DEPENDING ON THE ACTIVITY IN THE STADIUMS.

**PROTECTED WALKWAY**  
 THERE ARE CERTAIN EXTENTS OF THE TRACK THAT ARE ELEVATED GENERATING BENEATH IT A SHADED ROUTE DURING THE DAY AND A LIGHTED ONE DURING THE NIGHT.

**NODES**  
 GIVEN THE BRANCHING THAT OCCURS IN THESE POINTS, THE ROUTE OF THE RUNNING TRACK CHANGES AT THE NODES.



**FUTURE IMPACT**

THE TRANSFORMATION WILL IMPACT IN A VERY POSITIVE WAY THIS PART OF THE CITY, ACTIVATING & PROMOTING PHYSICAL ACTIVITIES THUS STAYING/KEEPING HEALTHY.

MATERIALIZING SUCH INTERVENTION COULD BE A PART OF THE "COMMUNITY SERVICE" THAT COLLEGE STUDENTS HAVE TO DO, OUR UNIVERSITY IS IN NEED OF CARING. SENSE OF COMMUNITY COMES WITH TEAM SACRIFICE, IF YOU'VE WORKED FOR IT, YOU'LL APPRECIATE IT.

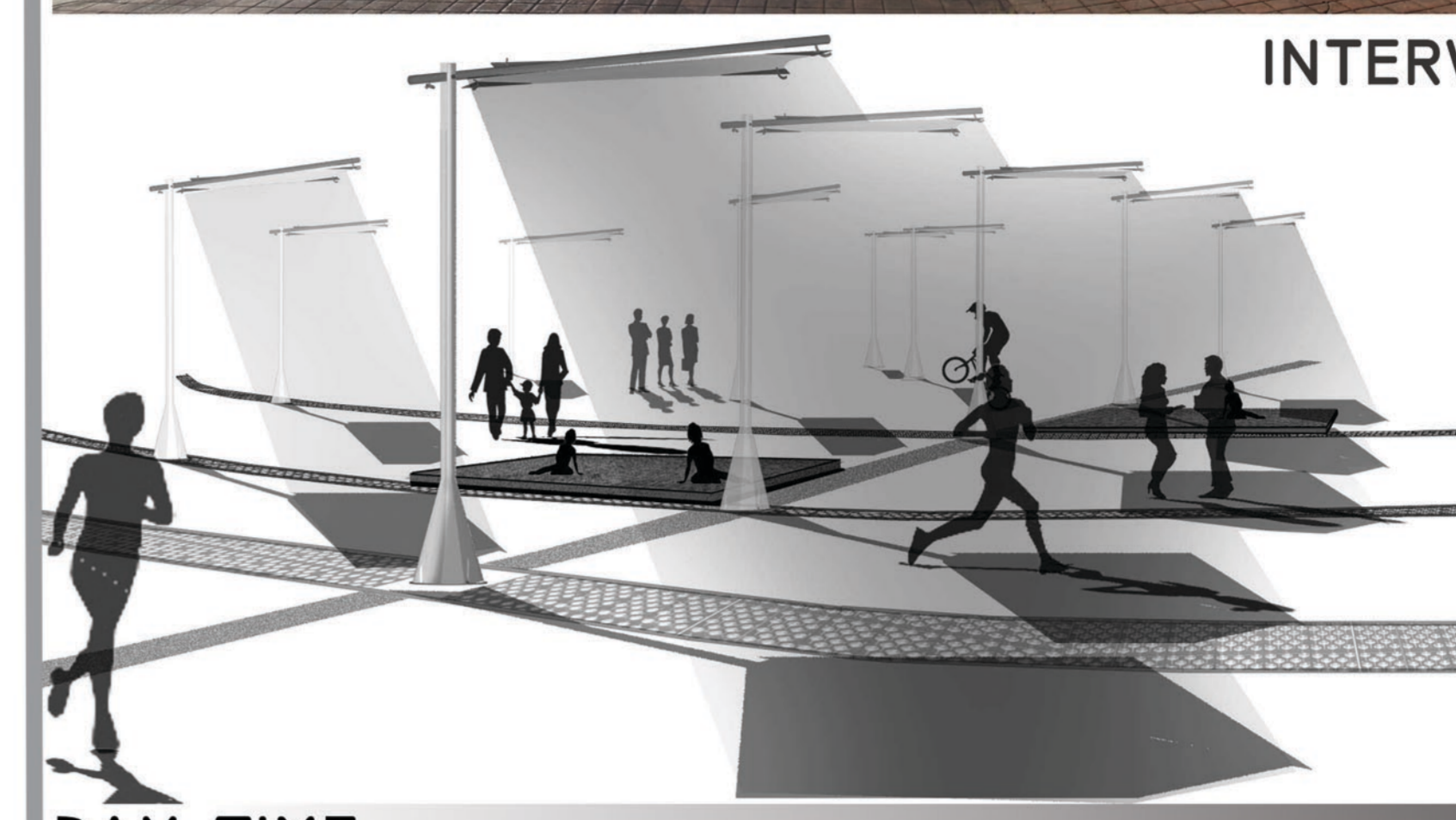
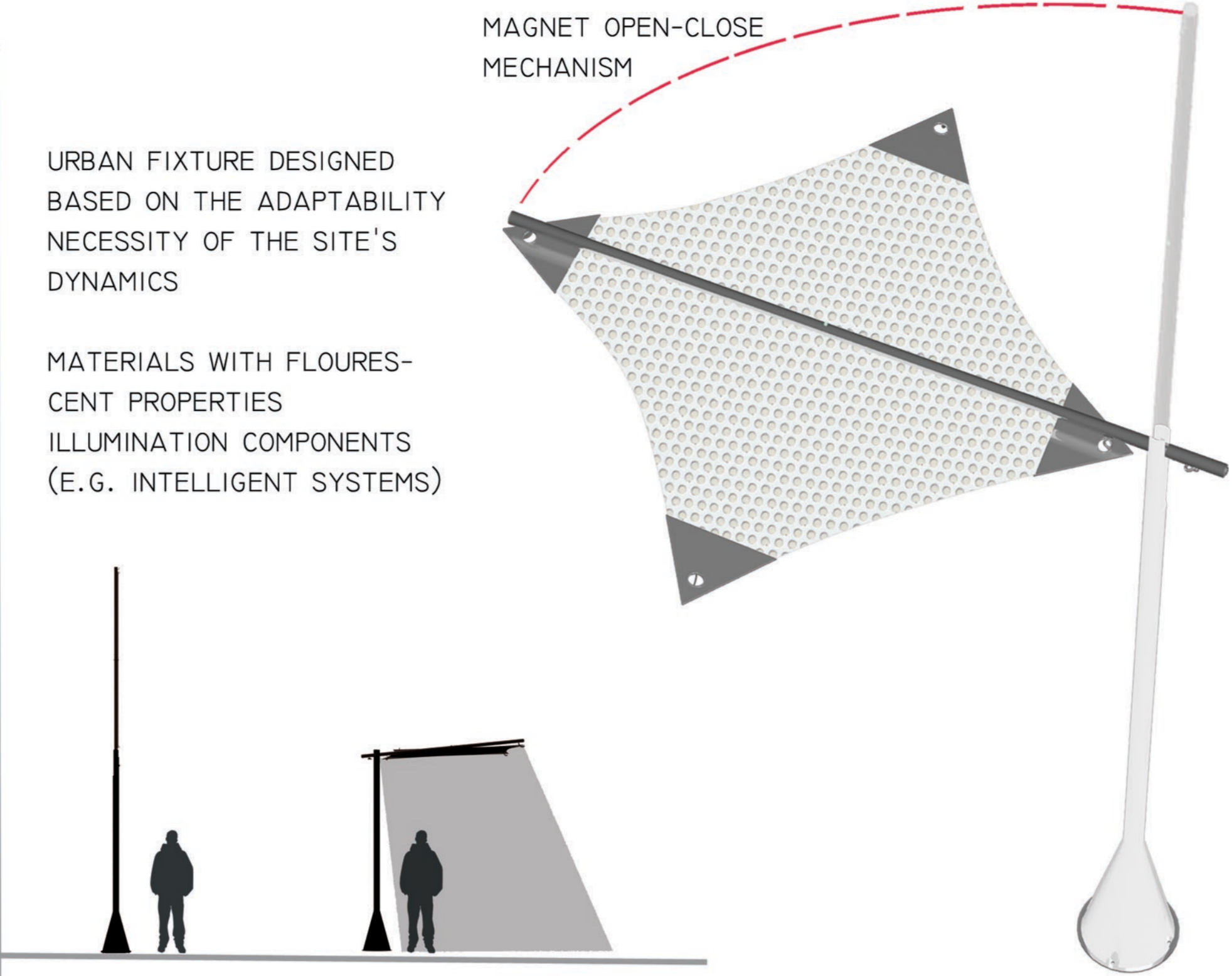
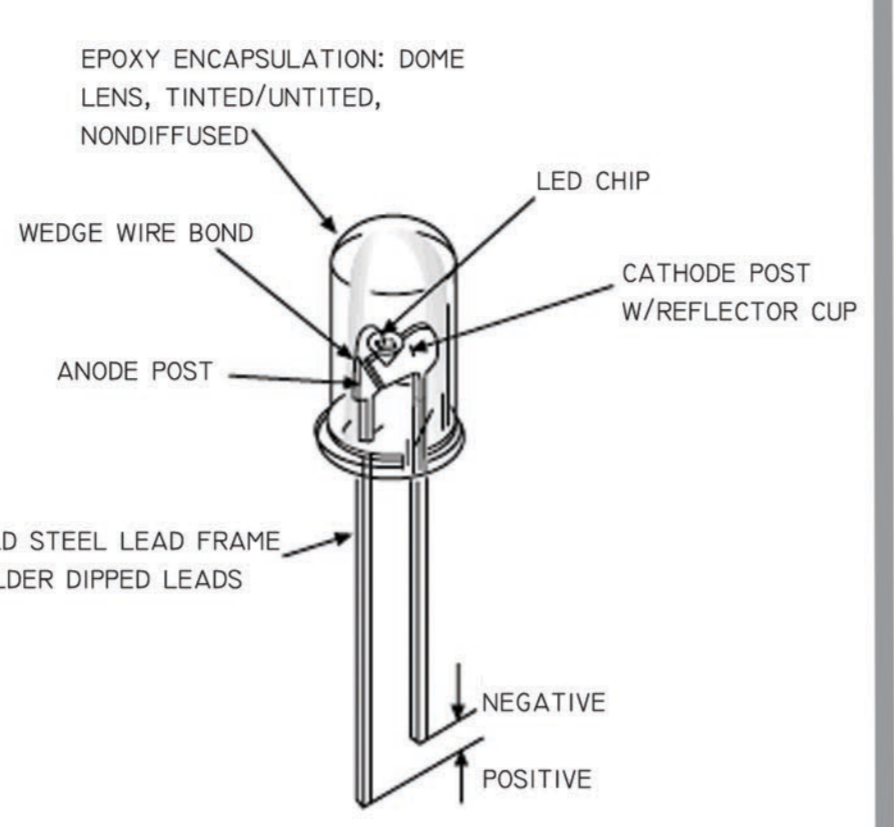
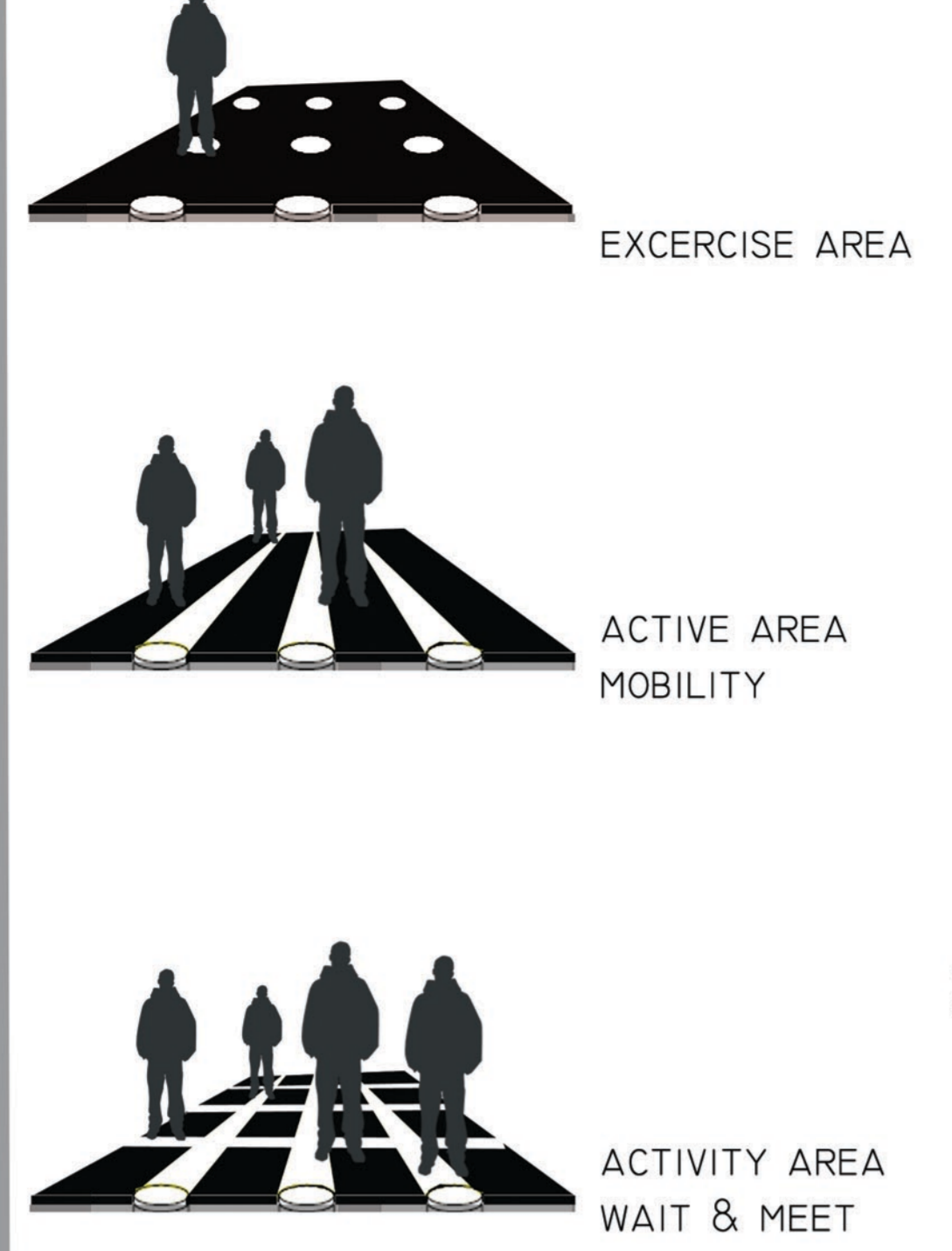
THESE SPACES WILL BECOME NEW NODES WITH DIFFERENT COMPLEMENTARY SERVICES:  
 -RAILROAD STATION (B)  
 -COFFEE SHOPS (A,B,C)  
 -PUBS/"TASCAS"(A,B,C)

PUBLIC SPACES ARE ACTIVATED AND BLUR BOUNDARIES WHILE GIVING A DEFINED CHARACTER TO EACH SPACE. WHEN SPACES ARE CONSTANTLY OCCUPIED, CHANCES OF LOWERING CRIME RATES GROW

TRANSPORTATION LINKS WILL BE RELIEVED BECAUSE OF THE SENSE OF COMUNITY THAT PUBLIC SPACES ENCOURAGE. THE CITY IS LIVED BY MAKING URBAN LIFE, WHAT BETTER WAY THAN TO WALK THROUGH IT?



**STRATEGIES:**



**LIGHTED TRACK**

THE TRACK HAS A PAVEMENT DESIGN THAT CORRESPONDS THE ONE AT THE SQUARE, GIVING CHARACTER TO THE RUNNING OR EXERCISE AREA WITHOUT PHYSICALLY BLOCKING ACCESS

**LIGHTED PAVEMENT DESIGN**

PAVEMENT DESIGN IS BASED ON A SIGNAGE THAT WE HAVE CREATED TO GUIDE AND REMARK THE WAY THIS OPEN PUBLIC SPACE IS APPROPRIATED BY USERS. THESE THREE WAYS OF ILLUMINATING SPACE HAS TO DO WITH THE MOBILITY FLOW ACCORDING TO OUR ANALYSIS

**LIGHT POST**

EXPANTION CAPACITY TO GENERATE SHADED AREAS DURING THE DAY AND LIGHT UP AT NIGHT, ACTIVATING UNDER USED SPACES BY MAKING THE CONDITIONS THAT PROVIDE OPPORTUNITIES FOR EXCHANGE

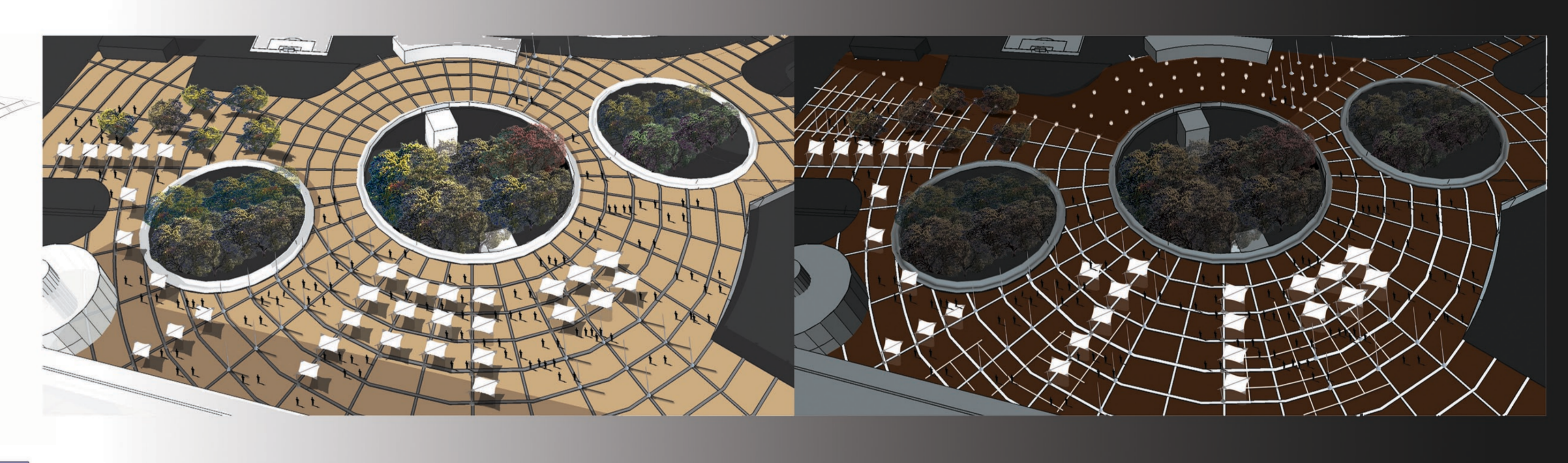
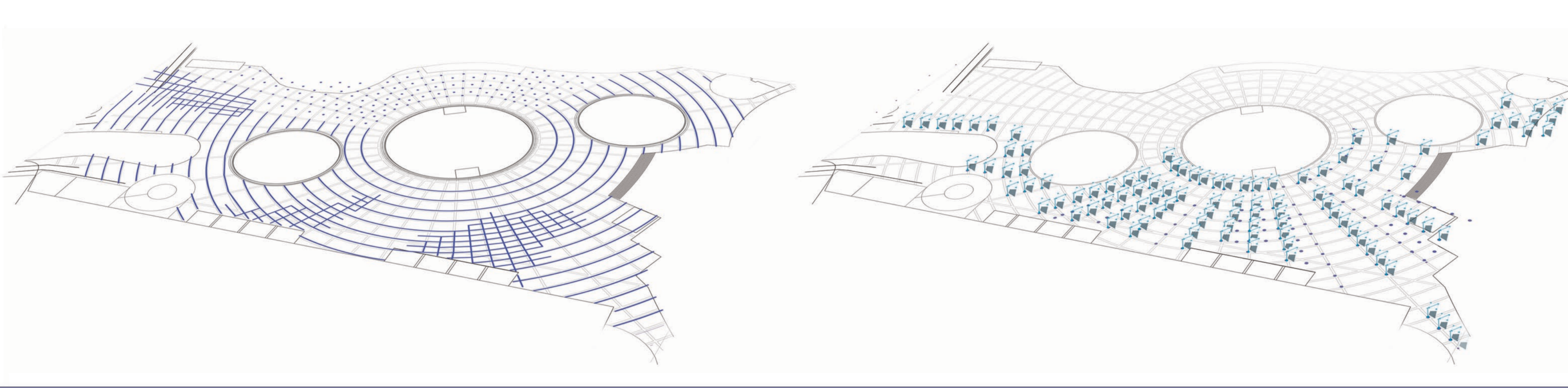
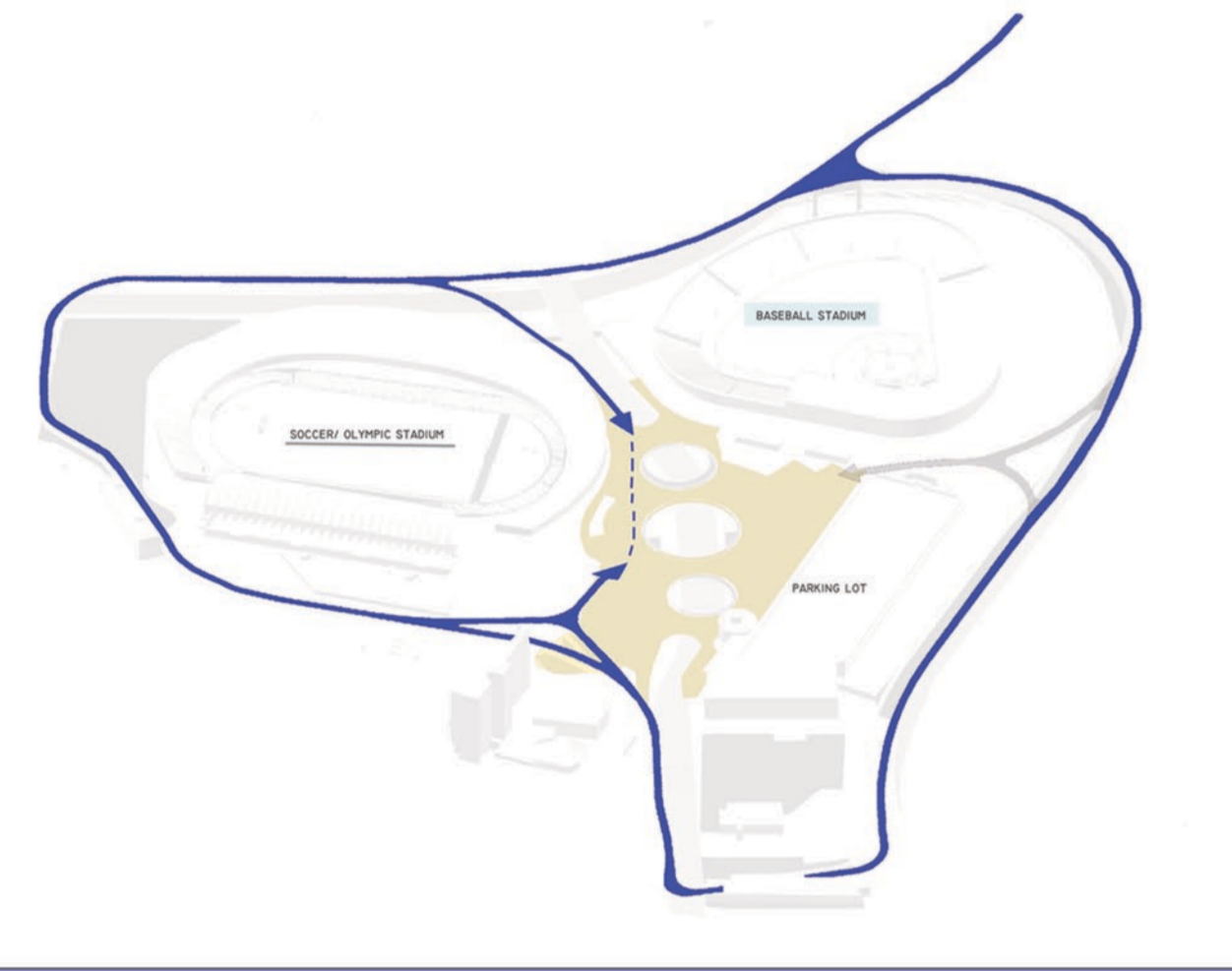
**DAY TIME**

DURING THE DAY, GUIDELIGHT SQUARE FUNCTIONS THROUGH THE SHADY SPOTS AND PLACES WHICH ONCE AGAIN PROVIDES THE CONDITIONS FOR ACTIVITIES (E.G. LOCAL MARKETS, GATHERINGS, ETC)

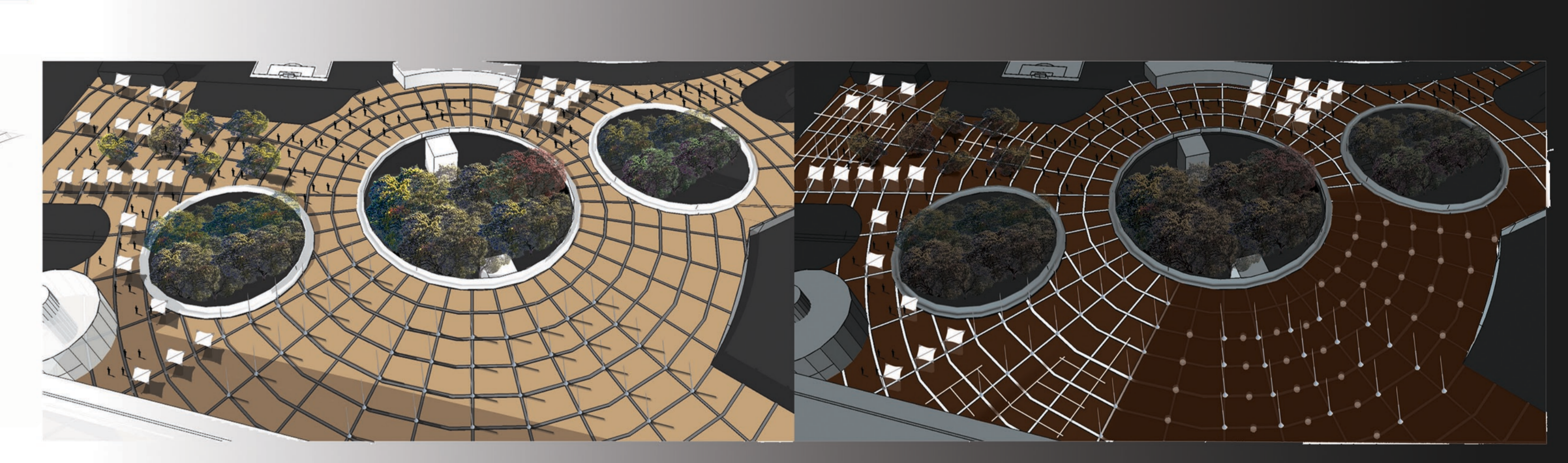
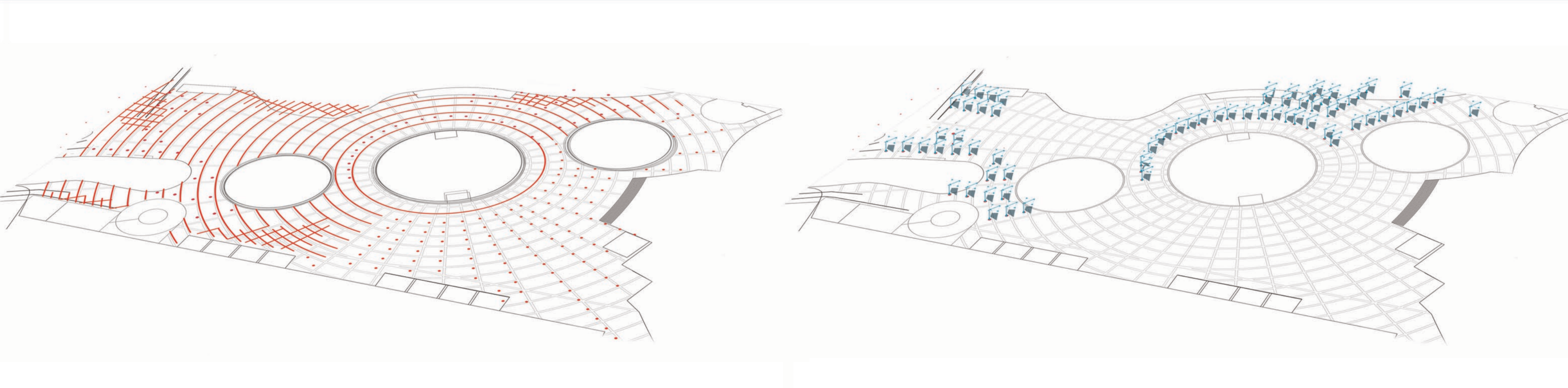
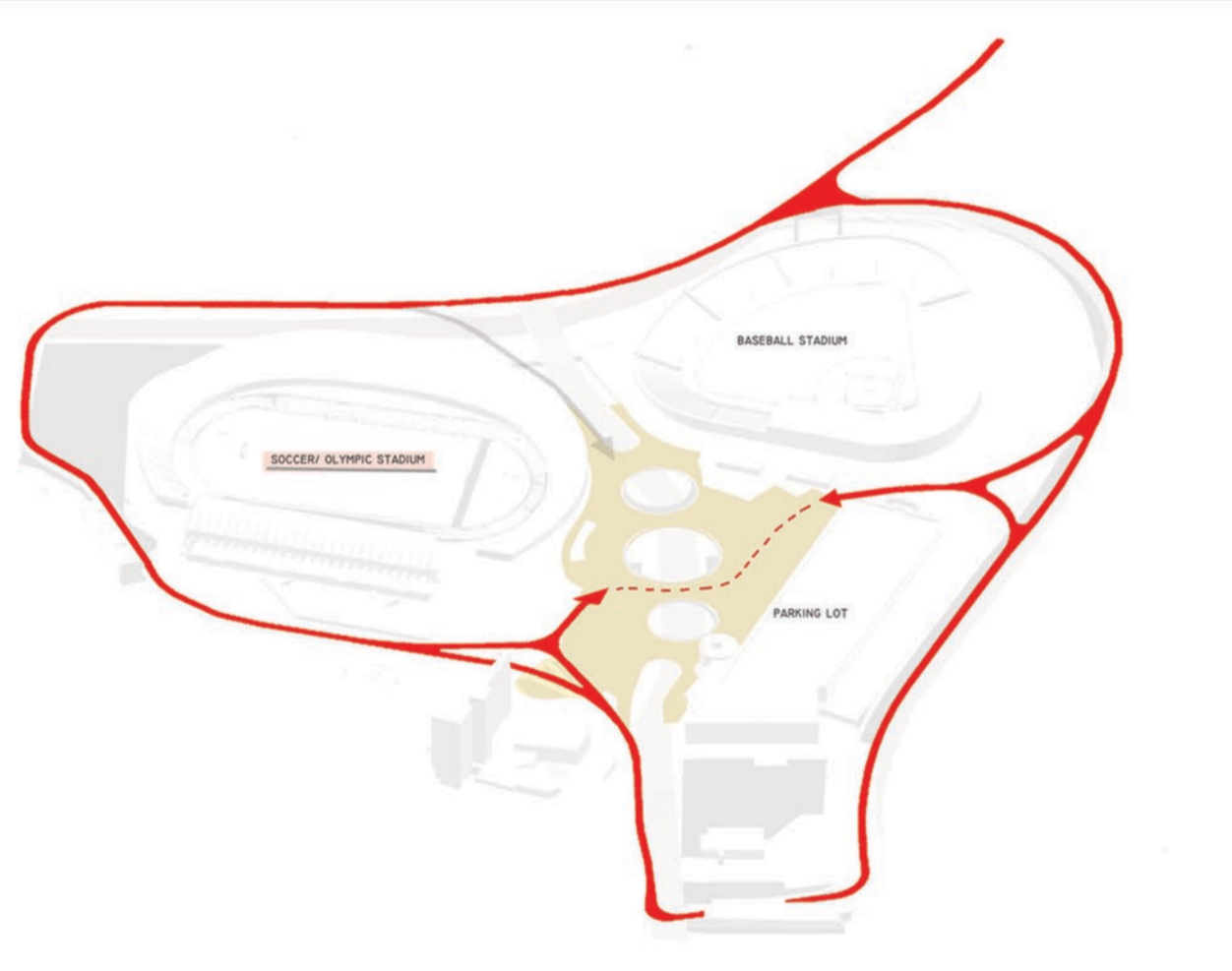
**NIGHT TIME**

IN THE NIGHT TIME, OUR INTERVENTION'S MAIN FUNCTION IS TO LIGHT UP GUIDELIGHT SQUARE, SIGNALING TO THE USERS WHICH AREA IS ACTIVE DEPENDING ON THE ESTADIUM'S ACTIVITIES

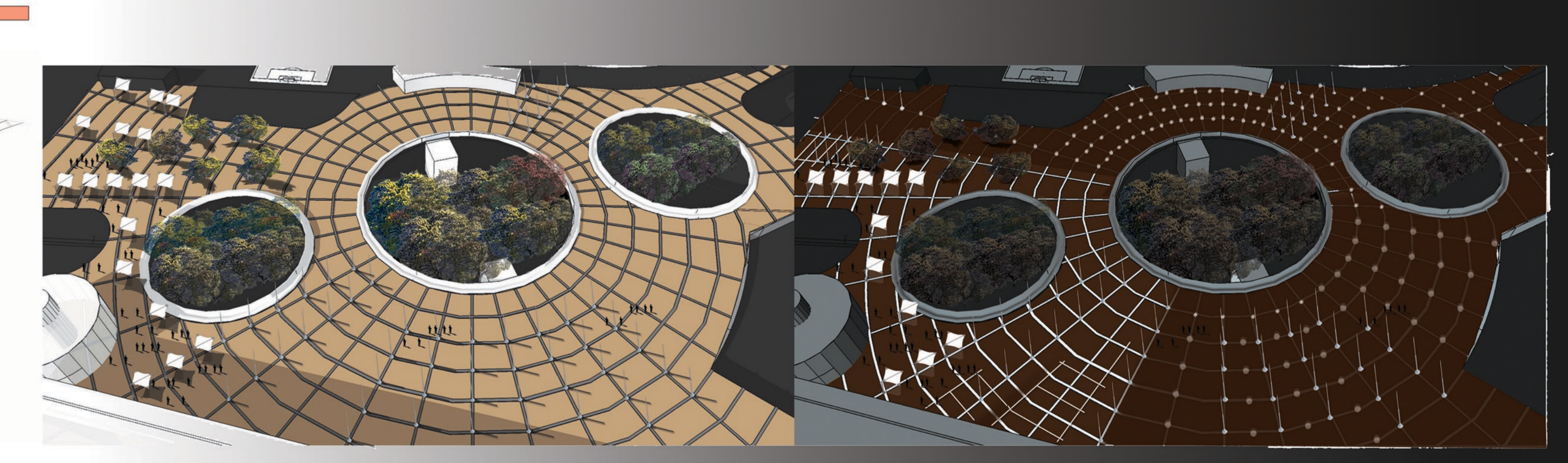
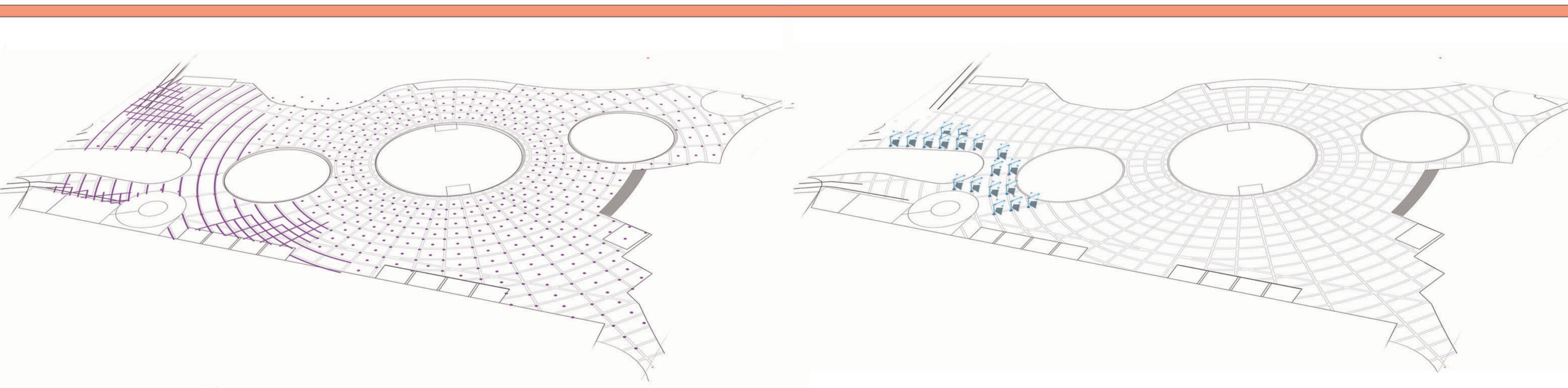
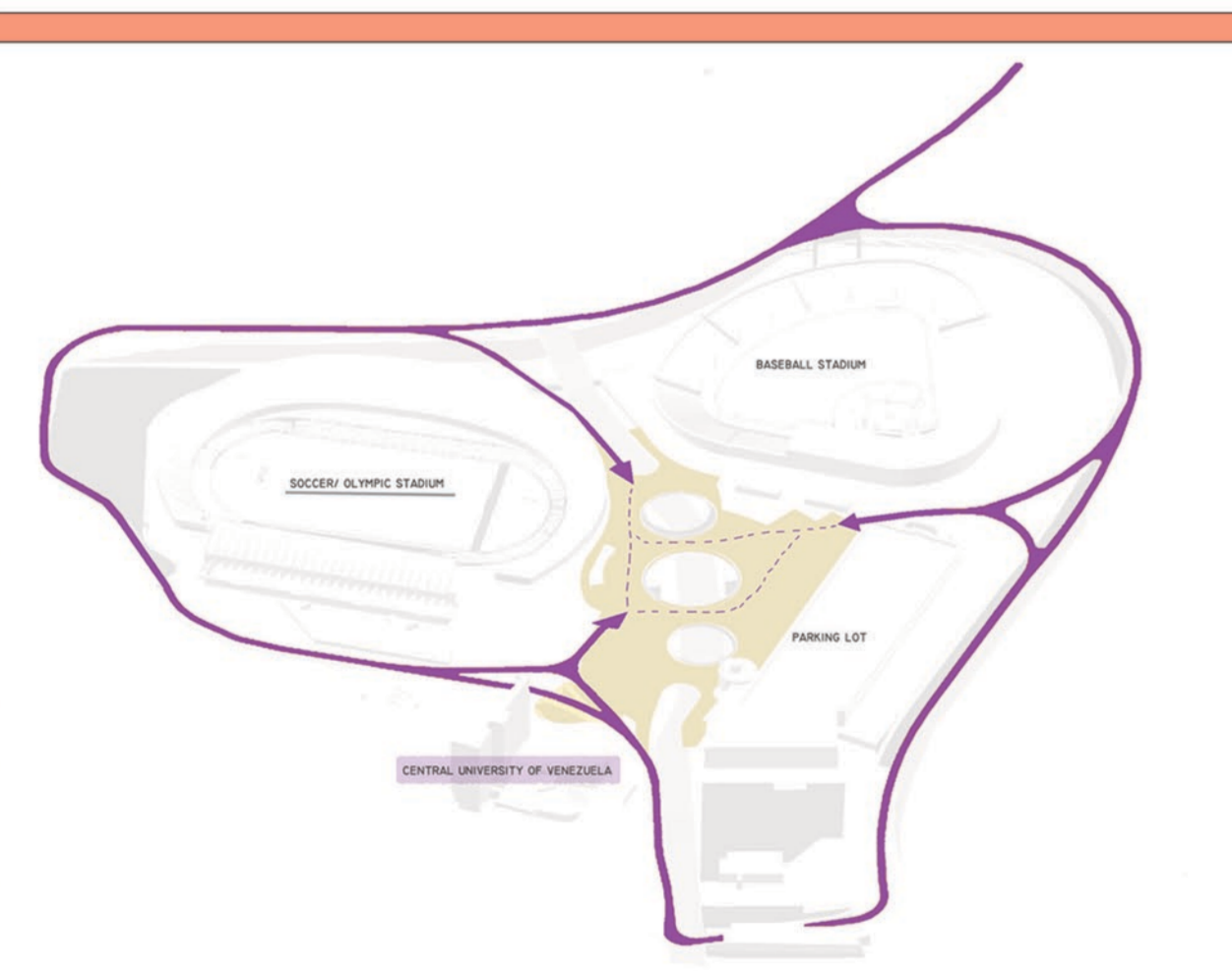
STRATEGIES  
BASEBALL SEASON  
CLASS



SOCCER SEASON  
CLASS



CLASS



SOCCER SEASON  
BASEBALL SEASON  
CLASS

