

FROM OLD FACTORY TO COMMUNITY CULTURE CENTER

WHERE IS THE SITE

THE SITE IS SITUATED IN SHENYANG CITY, LIAONING PROVINCE, CHINA, NORTH 41°47', EAST 123°22'

IN THE WASTED INDUSTRIAL AREA, WHICH IS DEVELOPING INTO CITY CENTER. IT IS SURROUNDED BY LARGE NUMBER OF RESIDENCES, SOME SCHOOLS, SOME BUILDINGS WAITING FOR CONSTRUCTION OR IN CONSTRUCTION. NEARBY IS THE CITY TRAIN STATION, ALSO THE CITY SHOPPING CENTER.

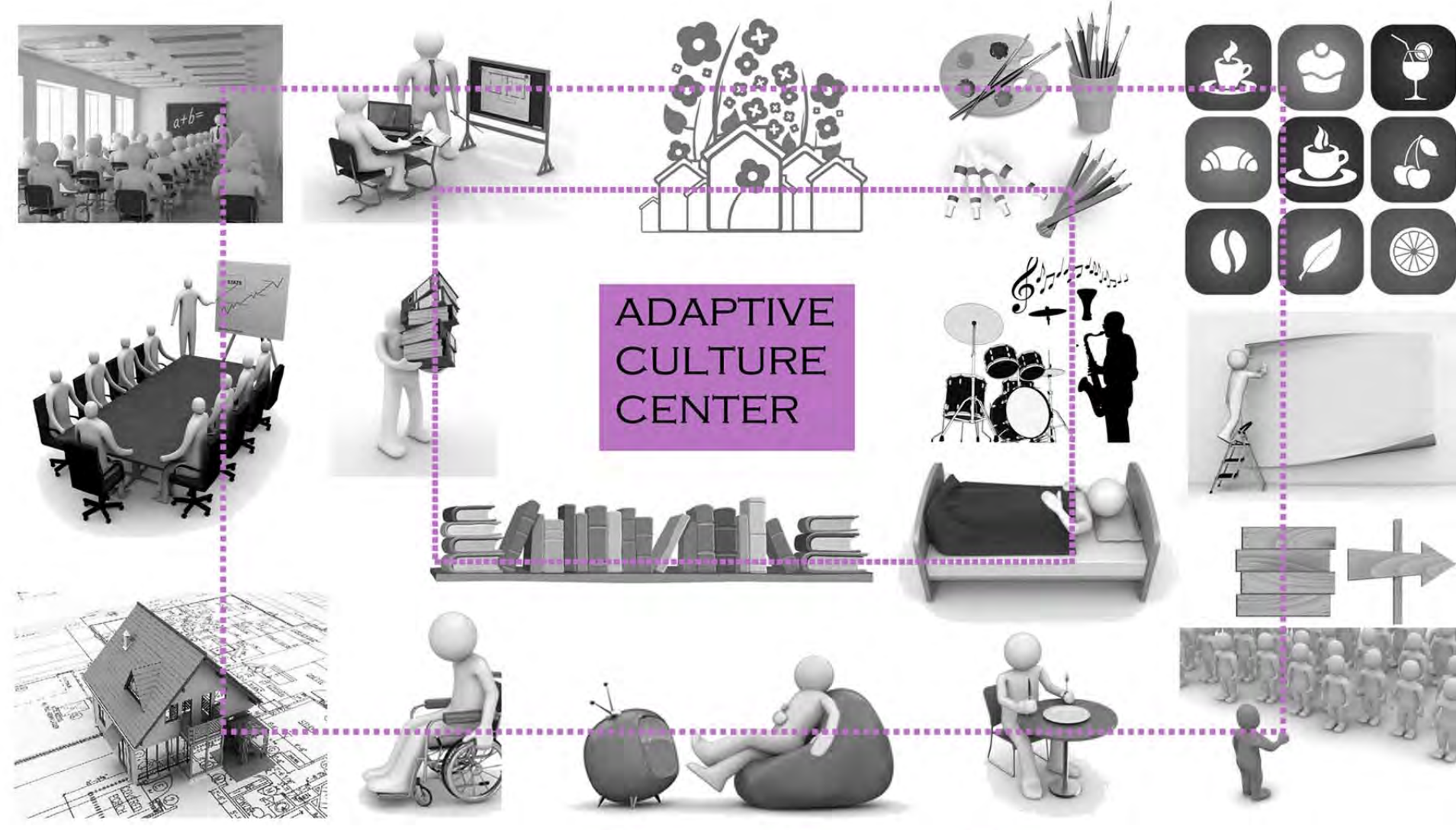
THERE ARE SOME SITUATIONS WE MUST CONCERN:

HISTORY OF THIS ONCE FAMOUS INDUSTRIAL CENTER CITY FAST DEVELOPING SPACE - HIGHRISE RESIDENCE BEING BUILT LARGE NUMBER OF CITIZENS CITY SHOPPING CENTER, CITY TRAIN STATION NEARBY SOME OTHER FACTORIES WAITING FOR TRANSFORMATION EXISTENCE OF SCHOOLS, MANY PUPILS AND PARENTS WILL APPEAR CITY PLANNER WHAT IT TO BE A CULTURE CENTER FOR ART WORKERS THE OLD AND HOUSEWIVES WANT SPACE TO COMMUNICATE, RELAX

POTENTIAL STATEHOLDERS ARTIST, ARCHITECT, STUDENT, PARENT, RESIDENTS (OLD AND YOUNG, WORK OR NOT), RESEARCH CENTER STAFF, PEOPLE PASSING CITY TRAIN STATION PEOPLE GOING SHOPPING, PEOPLE VISIT ART EXHIBITION ARTIST WORK ON WEEKDAYS, STUDENTS CAN STUDY ON WEEKENDS DIFFERENT SITUATION SHOULD BE CONSIDERED TO SUIT DIFFERENT KIND OF RESIDENCE - BREAKFAST FOR WORKING PEOPLE, LUNCH FOR THE OLD, CHANGEABLE SPACE FOR DIFFERENT ACTIVITIES - READING, EXHIBITION... SAVE PART OF THE ORIGINAL ELEMENTS FOR MEMORIZING



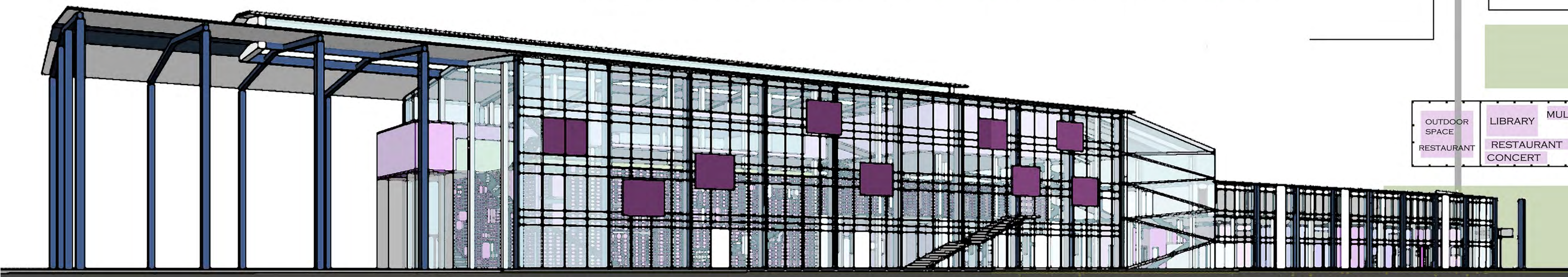
WHAT DO WE WANT



ADAPTIVE CULTURE CENTER

OUTDOOR SPACE RESTAURANT LIBRARY RESTAURANT CONCERT MULTI-MEDIA ROOM EXHIBITION REST ARTWORK OFFICE CLASSROOM FOR PUPIL SLEEPING MEETING

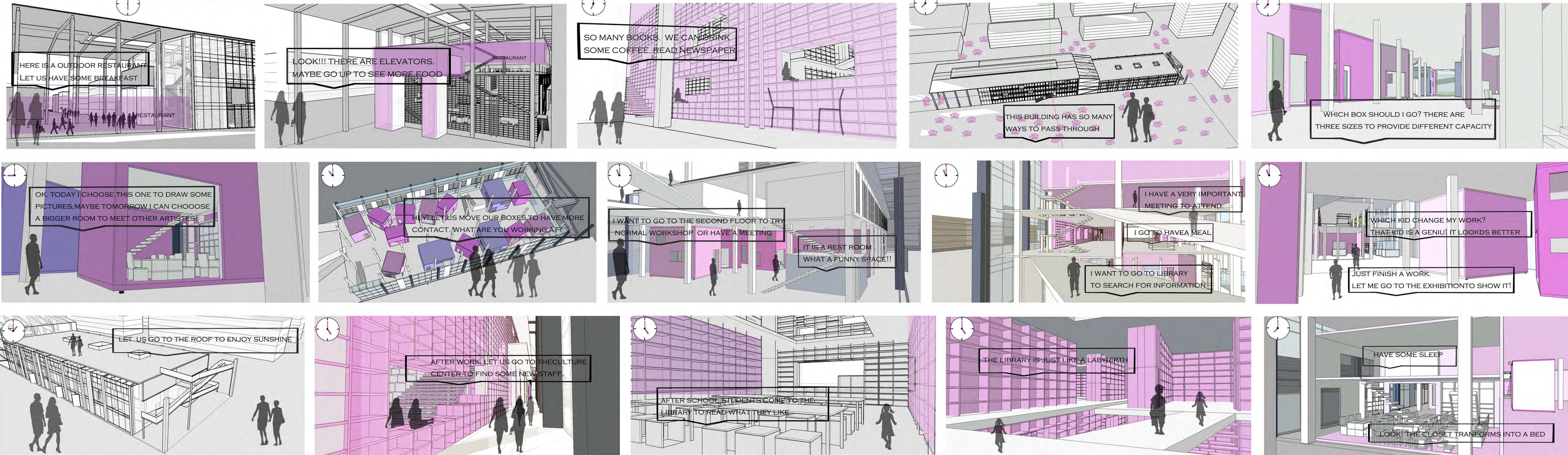
OUTDOOR ACTIVITIES



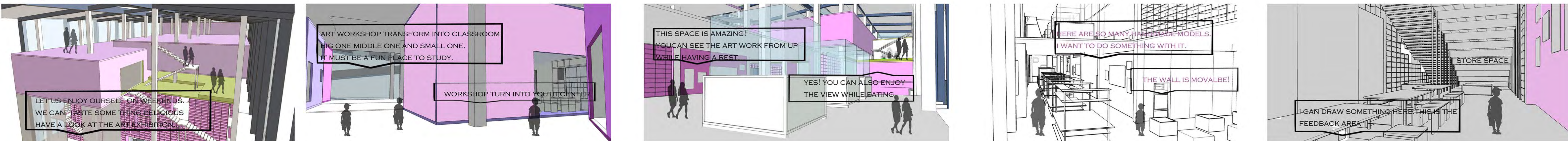
THE STORY BEGIN

ONE WEEKDAY

IN THE MORNING, LARGE OF NUMBER OF CITIZENS GO TO WORK



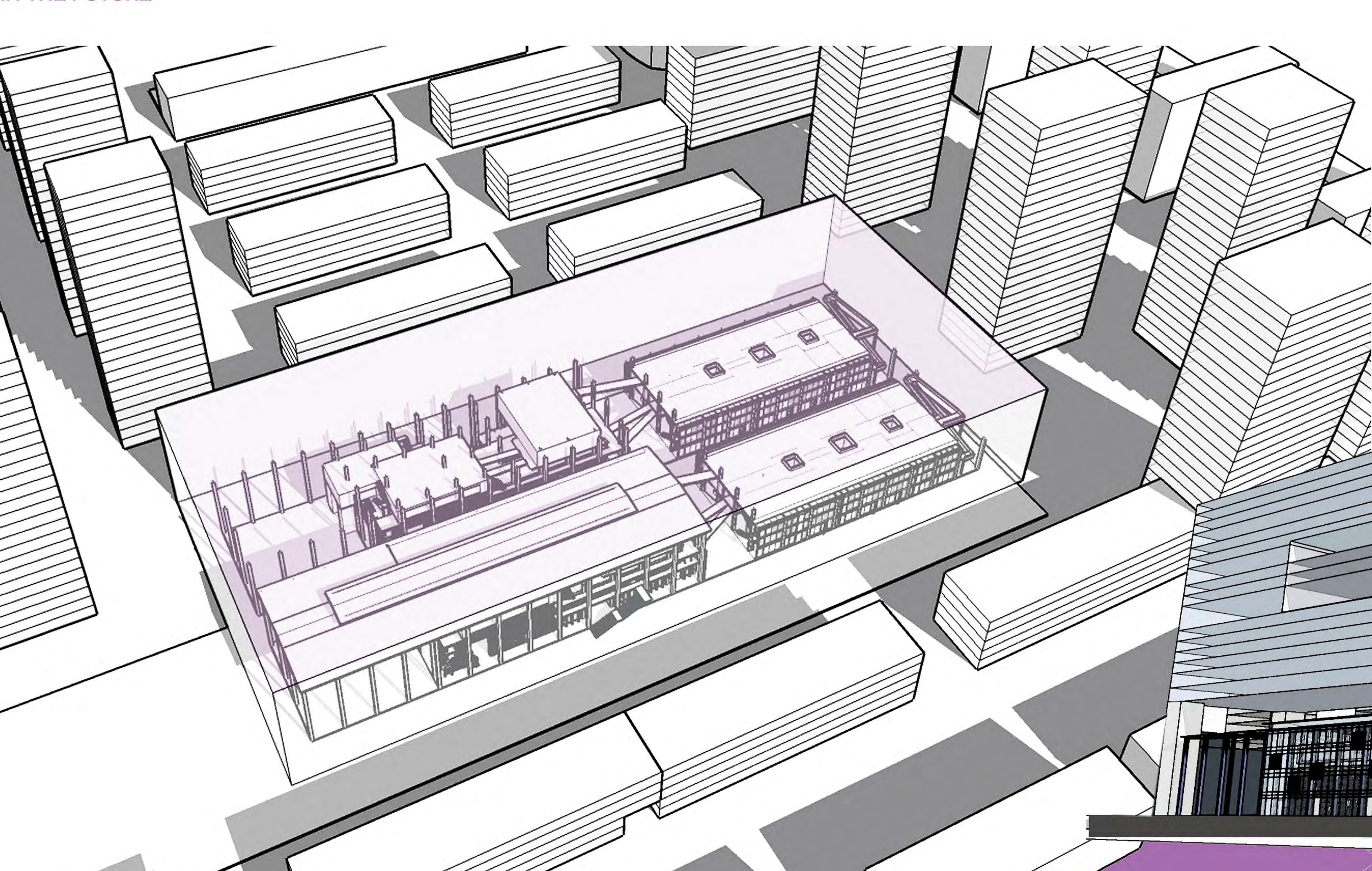
ON WEEKENDS



WHEN SPECIAL EVENTS HAPPEN



IN THE FUTURE



POSSIBLE 1



POSSIBLE 2

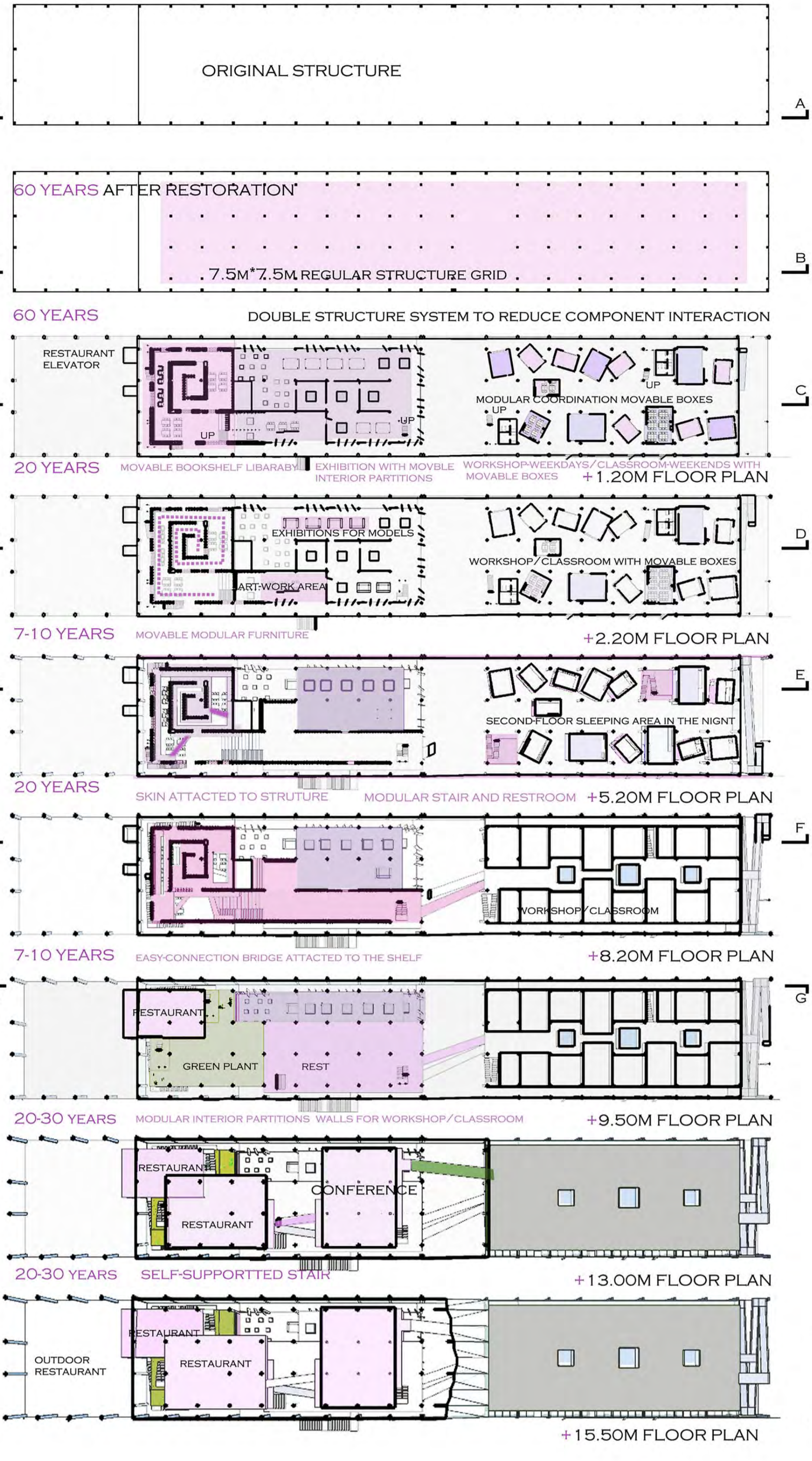


IN THE FUTURE, BECAUSE OF THE INCREASING NUMBER OF PEOPLE AND THE HIGH PRICE OF LAND, PEOPLE IS OF GREAT POSSIBILITY TO LIVE IN HIGH-RISE RESIDENCE. THEN, THE SITE WILL HOLD MORE PEOPLE THAN NOW, AND SINCE THE HUMAN CIVILIZATION, MORE PEOPLE ARE LIKELY TO TAKE PART IN THIS KIND OF BUILDING. THUS, I DOUBLE IT AND BUILD UP A BIG ROOF TO FIT THIS POSSIBILITY.

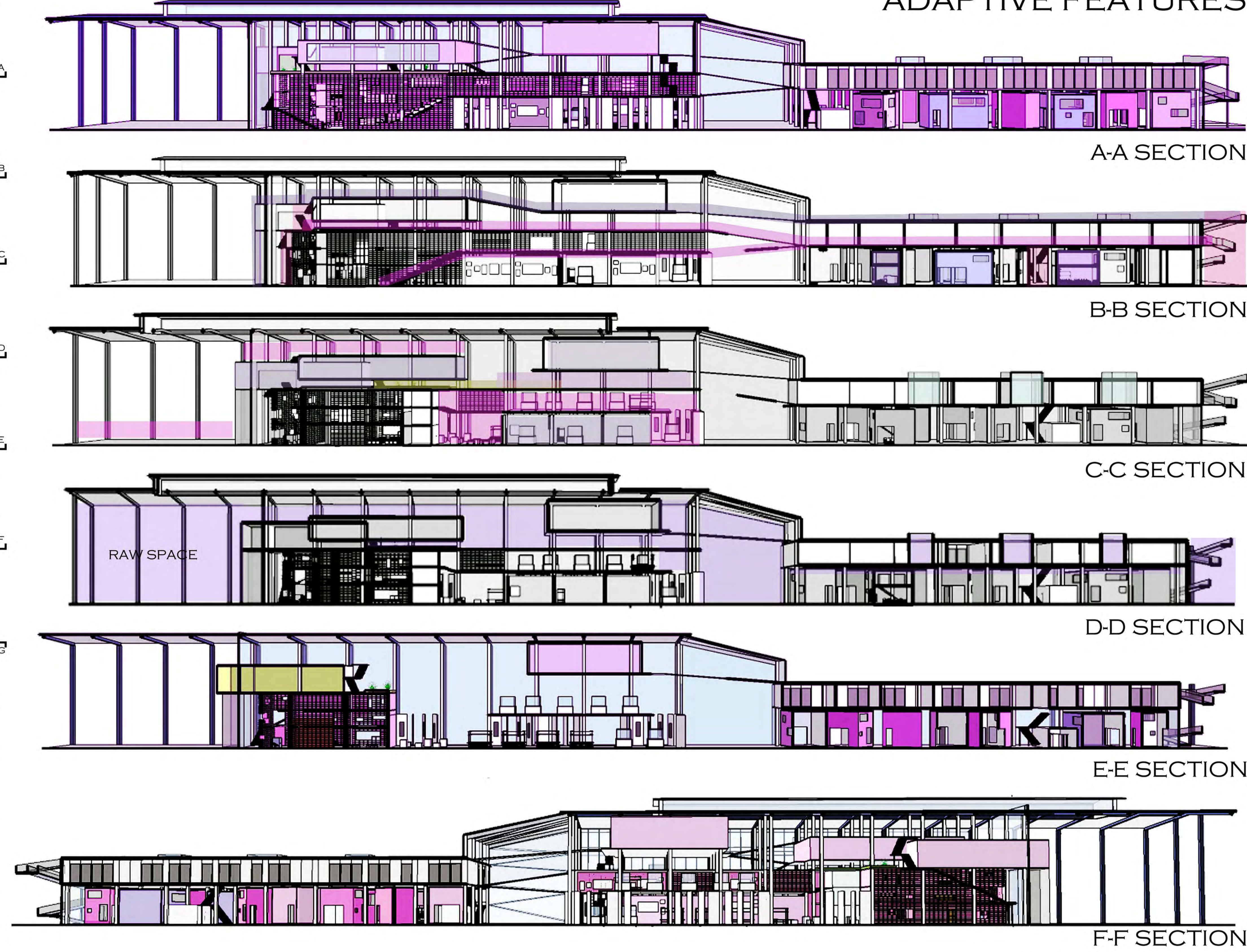
IN THE FUTURE, PEOPLE MAY KEEP THE LEFT PART RESIDENCES AND USE IT AS PUBLIC BUILDING OTHER THAN RESIDENCE. IN THIS SENSE, THIS COMMUNITY ITSELF WILL DEVELOPMENT INTO A BIG PUBLIC AREA. IF SOMEONE WANTS TO INCREASE THE LIVING CAPACITY HERE, MY SOLUTION IS TO BUILD IT ABOVE THE FACTORY. IN THIS WAY, BIG OPEN OUTER PUBLIC SPACE IS SAVED.

FROM OLD FACTORY TO COMMUNITY CULTURE CENTER

FLOOR PLAN

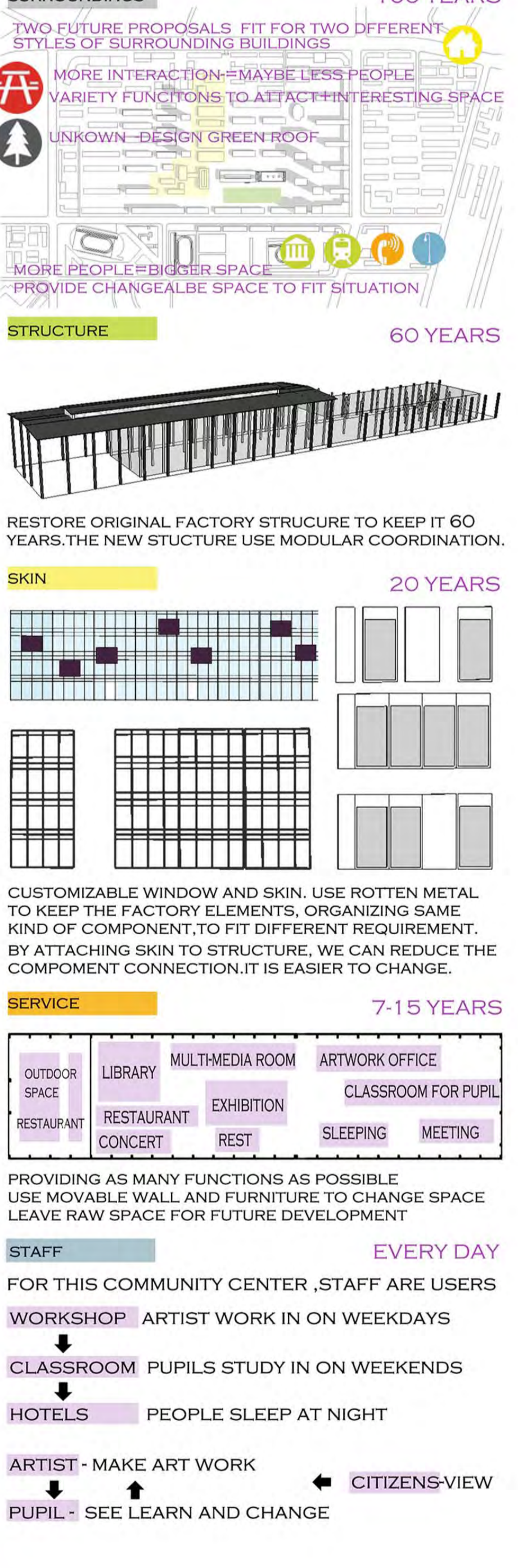


SECTION

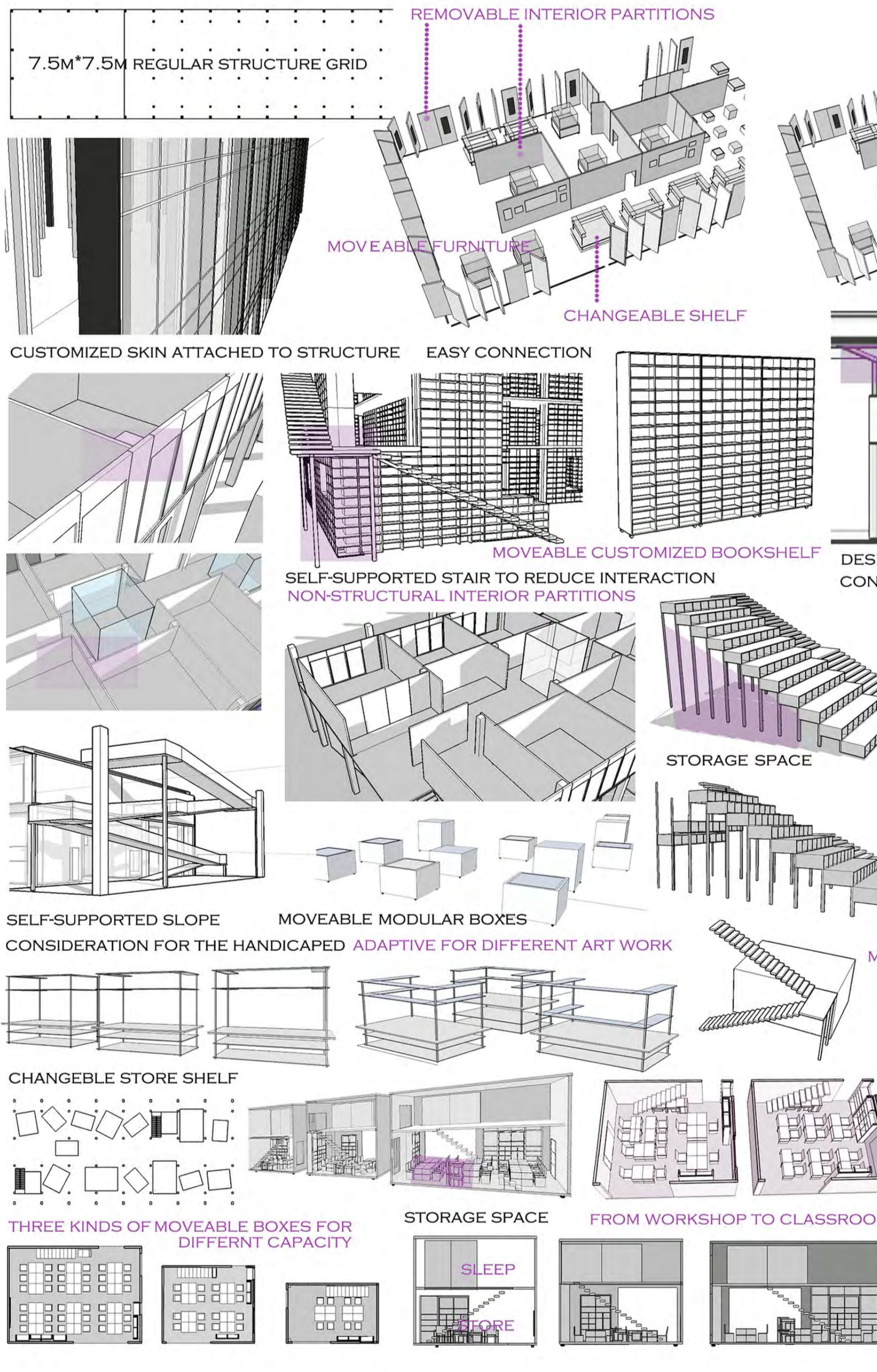


ADAPTIVE FEATURES

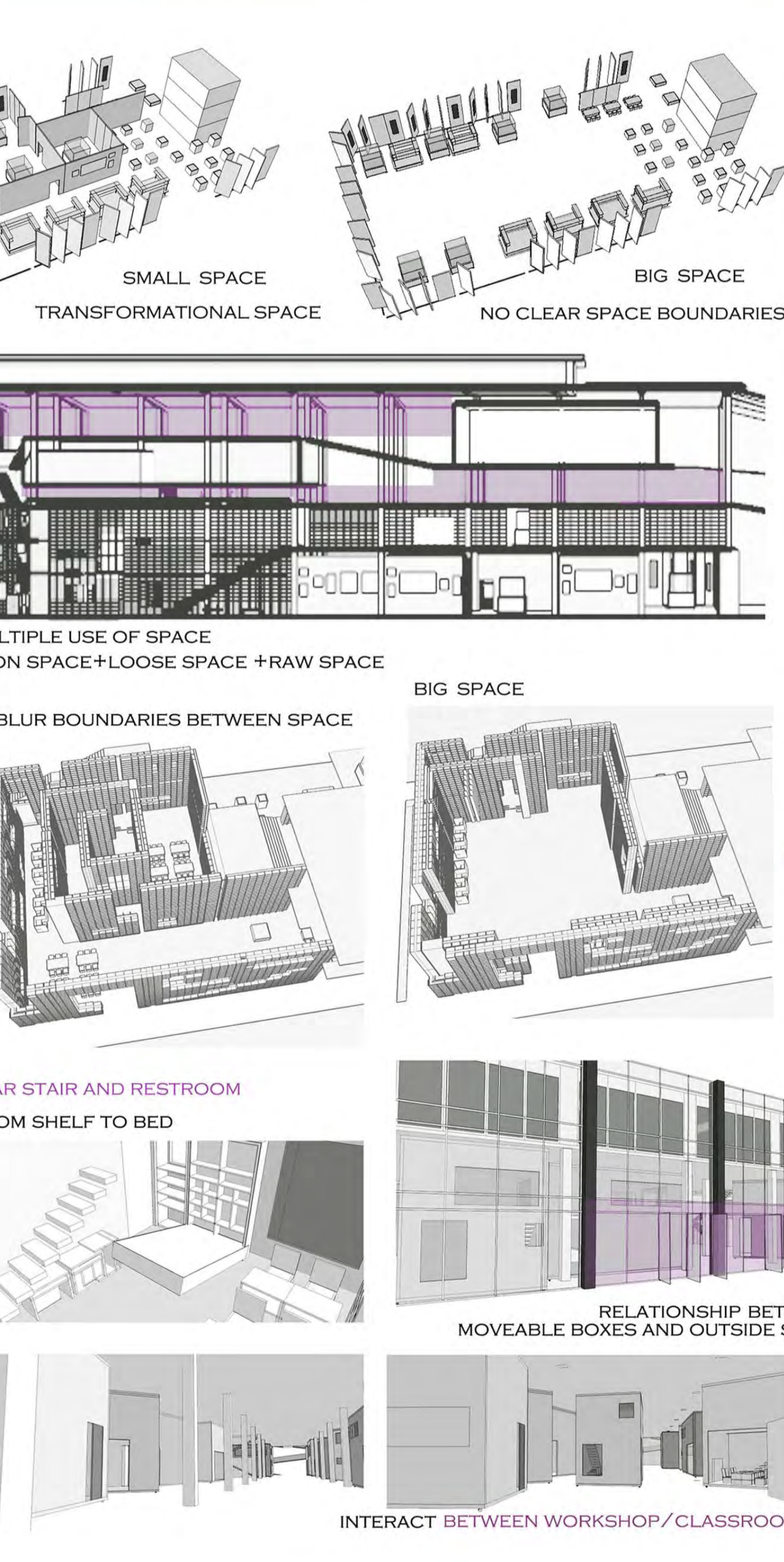
BUILDING LAYERS



COMPONENTS



SPACE



MINDSET/CULTURE

